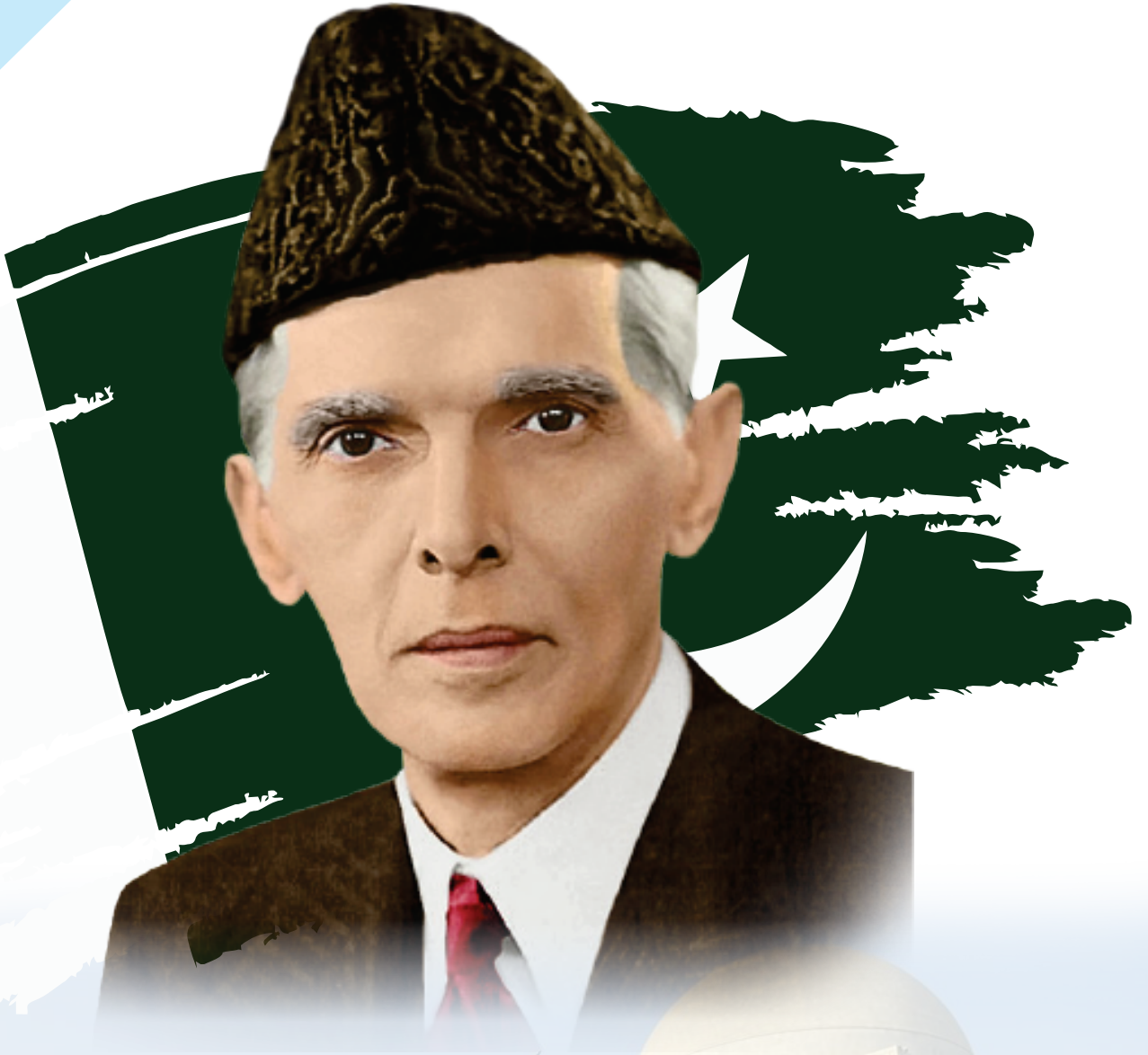




# PEOPLES UNIVERSITY OF MEDICAL & HEALTH SCIENCES FOR WOMEN

SHAHEED BENAZIR ABAD, SINDH

**POSTGRADUATE PROSPECTUS  
2024-25**



دو علم تلوار سے بھی زیادہ طاقتور ہے اس لئے  
علم کو اپنے ملک میں بڑھائیں کوئی آپ کو  
شکست نہیں دے سکتا،





**PROF. DR. GULSHAN ALI MEMON**

Vice Chancellor  
PUMHSW, SHAHEED BENAZIR ABAD

# TABLE OF CONTENTS

| S.No. | CONTENT  | PAGE NUMBER |
|-------|--|-------------|
| 01    | Messages   | 1           |
| 02    | Slogan, Mission, Vision, Core Values                 | 5           |
| 03    | Glimpse of PUMHSW at a Glance                        | 6           |
| 04    | Administration and Academic Supportive HR of PUMHSW  | 8           |
| 05    | Various Postgraduate Programs of PUMHSW              | 9           |
| 06    | Rules and Regulations of MD/MS Programs              | 37          |
| 07    | Fees Structure of Various Programs                   | 39          |
| 08    | Curriculum   | 42          |
| 09    | Resources  | 43          |
| 10    | Longitudinal Evaluation                              | 45          |
| 11    | Structure of Programs                                | 53          |
| 12    | Information: Strengthening the Postgraduate Programs | 57          |
| 13    | General Information                                  | 60          |
| 14    | Table of Specification of Various Programs           | 82          |
| 15    | Schedule of Admissions                               | 88          |
| 16    | Application Forms                                    | 89          |





## **VICE CHANCELLOR MESSAGE**

I am glad to extend my warm appreciation to all candidates who have applied for postgraduate Medical Education at Peoples University of Medical & Health Sciences for women Shaheed Benazir Abad (PUMHSW SBA). I am confident that our admission process, which values transparency and fairness, will satisfy all applicants, regardless of the outcome. For those interested, our prospectus provides a comprehensive guide throughout the Post-Graduation course.

As a young university, we pride ourselves on our collective wisdom, diverse capabilities, and graceful communication. Since our inception in 2011, our pledge has been to establish a world-class higher medical and health education institution globally. Our portfolio of health and medical programs reflects our response to societal, economic, and environmental scientists and make them employable and relevant. Our small class sizes, coupled with smart digital facilities and academic staff expertise, afford us a student experience that is second to none.

At PUMHSW SBA, we believe in assessment-driven learning as an effective tool for progress in Postgraduate programs. Thus, we have integrated computer intelligence and modern optical scanners into our examination systems, ensuring accuracy, credibility, and effectiveness. Our student counseling services remain ever-tuned and progressive, assisting local evolving facilities, advanced studies, or research abroad. All our efforts are geared towards creating a favorable teaching environment that fosters student-friendly interactions and encourages merit as a mission and vivid vision of our university.

I am confident this prospectus will greatly add to the efficiency and smooth functioning of the university and prove helpful to the users. All possible care is taken to prepare an error free peoples university of medical & health sciences for women, Nawabshah, SBA Post Graduates Prospectus. However, there remains likelihood of any error or omission especially when the compilation work is so scattered and bulk.

## **PROF: DR. GULSHAN ALI MEMON**

F.C.P.S, F.R.C.S, M.S, F.A.C.S GENERAL SURGERY,  
VICE CHANCELLOR,  
Peoples University of Medical & Health  
Sciences for Women, Shaheed Benazir Abad



## **PRO-VICE CHANCELLORS MESSAGE**

For me it is a pride to be the part of Peoples University of Medical and Health Sciences, an institute of excellence in medical education. The primary concern of the Universities is to provide quality education and promote research and PUMHSW is contributing in both under the guidance of Honorable Vice Chancellor PUMHSW SBA, input of competent faculty and efforts of the Director Postgraduate Studies.

During the entire process from entry to exit we never compromised on to the merit & standards of education. All the postgraduate courses are accredited with PM&DC and Higher Education Commission.

With the vision of Worthy Vice Chancellor Prof. Dr. Gulshan Ali Memon and Academic Council of University, curriculum committee formulated to update and revise curricula of various Degree and diploma postgraduate medical education courses. Simultaneously first ever postgraduate study rules and regulations draft constructed by the honorable Vice Chancellor, in exercise of powers conferred by section (13/5) the Peoples University of Medical & Health Sciences for Women, SBA MD/MS rules and regulations are notified on behalf of syndicate for section (32) (1). An extensive literature review of available curricula from national and international institutions was undertaken during the preparation of this document. As the medical profession and healthcare system in world continues to evolve, changes to this documents may be required and our university reserve the rights to amend or replace the curriculum at its sole discretion and /or in line with best international practices in the field of medicine.

PUMHSW is enriched with qualified faculty to disseminate knowledge and to supervise and train the learners, skills & education.

I am sure that Peoples University will progress in the coming years in the field of Medical & Health Sciences and will be at par with the international standards. I wish the postgraduates will work hard and with morality to raise the prestige of institute.

## **PROF: DR. MUHAMMAD SALEH KHASKHELI**

MCPS, FCPS, MSC Pain Management,

PRO-VICE CHANCELLOR,

Peoples University of Medical & Health

Sciences for Women, Shaheed Benazir Abad





## REGISTRAR'S MESSAGE

Welcome to the Peoples University of Medical & Health Sciences for Women Shaheed Benazir Abad. It is with great joy that I greet prospective students.

Through a path of learning and discovery and overcoming obstacles, we will stand on the rising sun and mould you into world-class professionals.

You will be supported by the university in your development and achievement. Despite the fact that the university is relatively new—it was refurbished in 2011—its staff is made up of highly qualified individuals who have been instructing and educating medical students for decades.

This institution has established itself as a powerhouse of innovation, modernity, and depth of knowledge thanks to the experience PUMHS students have in educating international students when you will be viewed as ambassadors of Pakistan with your and the wisdom of the senior teachers with excitement.

Your education will provide you with the skills necessary to meet future health care concerns. You will be expected to serve the human race with compassion and care, as well as exceptional abilities and conduct.

I want to emphasize that working hard will help you achieve your goals while attending this university. As Custodian/Registrar, I guarantee that you will receive a top-notch education that is rich in instruction, training, research, and genuine humanism.

I'm hoping you'll return the favor by dedicating yourself to making PUMHS the greatest modern educational facility.

## PROF: DR. QURBAN ALI RAHU

MBBS, FCPS Cardiology,

REGISTRAR,

Peoples University of Medical & Health

Sciences for Women, Shaheed Benazir Abad



## **DIRECTOR POSTGRADUATE'S MESSAGE**

The main goal of this prospectus is to provide prospective students with all pertinent information. It gives information about the medical, surgical, basic community, and other allied courses that PUMHS offers. Information and specifics on the requirements for admission, the application process, and other topics are also included in this prospectus. Despite the limited time and space, every effort has been made to cover the most important and pertinent components of the admissions and course administration processes.

The postgraduate trainees of various diploma and master degree courses admitted to clinical sciences, gain the knowledge, learn the skills and attitude and serve ailing humanity to their capacity under supervision of highly professional faculty. The PUMHSW possess state of art spacious, purpose built building of postgraduate medical center incorporated with seminar rooms, workshop halls, library and offices hence facilitating postgraduate trainees their ethical values, professional development and advanced academic research.

Additionally, it should be mentioned that this prospectus is accurate and current as of the date of release. To achieve transparency and improved competency, the Postgraduate Medical Centre authorities reserve the right to make changes to the rules or to any other aspect of the admission process and conduct of the courses without prior notice as and when deemed necessary as per the needs, and policies of the University, PM&DC, and Higher Education Commission.

## **PROF: DR. ALI AKBAR SIYAL**

MCPS, FCPS, Pediatric Medicine,  
Director Postgraduate & Medical Education,  
Peoples University of Medical & Health  
Sciences for Women, Shaheed Benazir Abad



# TO EDUCATE WOMEN IS TO PROGRESS THE NATION

## MISSION

The PUMHSW –SBA should take up for better health through excellence in patient care, research and Bio-medical Education.

## VISION

The PUMHSW-SBA will stand with recognized leadership in medical and Health Sciences delivering patient-centered and technological advanced medical education, transformative research, and exceptional clinical and preventive care, leading to healthier communities.

## CORE VALUES:

**The PUMHSW-SBA, the core values will be operated with collegiality, compassion, excellency, Inclusivity, Integrity mutual respect & leadership.**

**Collegiality-** reflected in collaboration, partnership, sense of community and team work.

**Compassion-** reflected in caring, empathy and social responsibility.

**Excellence-** reflected in distinction, effectiveness, efficiency, passion, quality and impact.

**Inclusivity-** reflected in diversity, equality, fairness and impartiality.

**Integrity-** reflected in accountability, ethical behavior, honesty and reliability.

**Mutual Respect-** Respect for others guides our manners, respect for ourselves guides our morals.

**Leadership-** reflected in courage, honor, professionalism, transparency and vision.



It was the vision of Shaheed Zulfikar Ali Bhutto that came to reality and the Peoples University of Medical and Health Sciences for women commenced its first academic journey in April 1974 at Nawabshah with the name of Peoples Medical College. Till now, around (6200) Girls students have been graduated from this prestigious college so far and have been serving the country and abroad. This college was supposed to be the great motivation for the girls' students and has set the wonderful example of women empowerment in the country since this is the biggest women university in the region. Apart from this, postgraduate education in this institution also started in 2004 and since then about 745 postgraduate trainees have been imparted trainings in various areas of specializations. They have been serving in different nook and corner of the country which is the matter of pride for the institution.

Initially, the college was temporarily accommodated in portion of district council high school consisting of a couple of HOSTELS and AUDITORIUM (LATIF HALL) along with the main building of Muslim Boarding house. The first batch of undergraduates was admitted with an approximate enrollment of about 100 students. The district hospital was attached to the college for the purpose of clinical teaching.

The postgraduate training started in 2004 with enrollment of about 25 trainees. The college since then made rapid progress in different phases and was upgraded into the university as Peoples University of medical and health sciences for women SBA through Act of Government of Sindh 2009 dated 21-12-2009 Governor of Sindh accorded ascent on 10-11-2010.

The objectives and functions of the university include: promotion of specialists practice by securing improvement of teaching and training, arranging postgraduates medical, surgical and other specialist trainings; conducting examinations for awarding degrees and diplomas to the promotions of research work in the clinical practice.

1. Since the inception of university, it has actively pursued improvements post-graduation medical education in Pakistan. Currently, the university offers degree diploma courses in many disciplines. The examination system has been restructured and modernized very transparent tools: conduct, objective, reliable, candid, disciplined methods of assessment.



To further standardize the process, constant efforts are made to improve the quality of examination system. To evaluate the overall competence and performance of the students / PSs from the different angles of their academics stay in the university, the institution has introduced the midterm evaluation (IMM) for all degrees courses with very updated system of conduct that meets the international standards.

2. Examination Branches has been established and divided with three sections, conduct branch, secret branch and top secret branch, having been equipped with the high quality optical marker and photocopier along computers and printers.
3. To shape up the infrastructure of the university, two hundred acres of land has been purchased which is at the short distance of 3.5 kilometers away in the outskirts of Nawabshah city. The construction of compound boundary wall with barbed wire and security pickets has recently been completed. The construction of various academics and administrative blocks are in progress.
4. The Deans of basic, medicine, allied, surgery, allied, and community health sciences with their respective faculty members have been striving day in and day out with passion and vision for the uplifting of quality. This team work energy and struggle has set an example by bringing this institution in the front line of Pakistan's top universities.
5. Registrar's Office is the main stream of the university and it definitely plays significant role in the administrative and academics flows of the institute. Prime mover Registrar of the People's university of medical and health sciences for women was appointed on 13th July 2011.
6. The Directorate of postgraduate studies (medical) has been shifted to the modern building with provision of all facilities to smooth the way, assess and evaluate postgraduate scholars. There are several post-graduate courses being offered by the university. Every postgraduate-course is properly structured with updated curriculum that meets all the criteria of international standard which are also recognized and approved by HEC and PM&DC. Whereas the teaching and training classes are being conducted by faculty through very dynamic, congruent and congenial atmosphere of learning. In this endeavor, the Post-graduate individual is transformed to be a great doctor that is ready to serve the society.





## BASIC DEPARTMENTS

- ▶ Anatomy
- ▶ Physiology
- ▶ Biochemistry
- ▶ Pathology
- ▶ Pharmacology
- ▶ Community Medicine
- ▶ Forensic Medicine

## MEDICINE & ALLIED

- ▶ Medicine Unit-I
- ▶ Medicine Unit-II
- ▶ Medicine Unit-III
- ▶ Medicine Unit-IV
- ▶ Pediatrics
- ▶ Cardiology
- ▶ Neurology
- ▶ V.D & Skin
- ▶ Psychiatry
- ▶ Chest Medicine / Pulmonary
- ▶ Nephrology
- ▶ Oncology

## FACULTY OF COMMUNITY HEALTH & ALLIED SCIENCES

### UNDERGRADUATE PROGRAMS

- ▶ MBBS
- ▶ BSPH
- ▶ BSN
- ▶ DPT
- ▶ Pharm-D

### POSTGRADUATE PROGRAMS

- ▶ M. Phil and MSPH

## SURGERY & ALLIED

- ▶ Surgery Unit-I
- ▶ Surgery Unit-II
- ▶ Surgery Unit-III
- ▶ Gynae & Obstetrics Unit-I
- ▶ Gynae & Obstetrics Unit-II
- ▶ Paediatric Surgery
- ▶ Ear, Nose & Throat
- ▶ Ophthalmology
- ▶ Anaesthesiology
- ▶ Neuro Surgery
- ▶ Urology
- ▶ Orthopaedics
- ▶ Radiology
- ▶ Audiology



The Postgraduate Department at People's University of Medical and Health Sciences for Women (PUMHSW) is a dynamic and integral component of our institution's academic ecosystem. This department is dedicated to the advancement of medical education, research, and specialization beyond the undergraduate level, catering to the needs and aspirations of healthcare professionals seeking to enhance their knowledge and expertise.

## EDUCATION AND TRAINING:

Our Postgraduate Department offers a wide spectrum of postgraduate programs, including residency programs, fellowships, and master's degrees in various medical and healthcare disciplines including sub specialties and super specialties. These programs provide a platform for healthcare practitioners to delve deeper into their respective fields, fostering a culture of continuous learning and professional development.

## RESIDENCY PROGRAMS

PUMHSW offers highly competitive and comprehensive residency programs in specialties such as Internal Medicine, Surgery, Pediatrics, Obstetrics and Gynecology, and more. These programs provide hands-on clinical training, exposure to diverse medical cases, and mentorship by experienced faculty members. Residents gain invaluable practical experience while honing their diagnostic and patient management skills.

## FELLOWSHIP PROGRAMS

Our fellowship programs are designed for postgraduate doctors and medical professionals looking to sub-specialize in medicine allied areas like Cardiology, Gastroenterology, Endocrinology, and Nephrology, among others as well in Surgical allied areas like Anaesthesiology, Orthopaedics, ENT, Ophthalmology orthopaedics, neuro & paed surgery. PUMHSW also offers super speciality of pain medicine. These programs offer specialized training and clinical exposure in their chosen fields, preparing fellows to excel in their careers.

## MASTER'S DEGREES

PUMHSW also offers master's degree programs in fields such as Public Health, Health Administration, and Clinical Psychology. These programs provide a broader perspective on healthcare systems, management, and mental health, enabling students to become leaders and experts in their respective domains.

## RESEARCH AND INNOVATION

The Postgraduate Department actively promotes research and innovation. Postgraduate students are encouraged to engage in research projects, contributing to the generation of new knowledge in their respective fields. Our faculty members are committed to guiding and mentoring students through their research endeavors, ensuring that they have the necessary skills and resources to make meaningful contributions to the medical and healthcare communities.

## FACULTY EXPERTISE

The Postgraduate Department is staffed by a team of experienced and accomplished faculty members who are leaders in their respective specialties. They bring a wealth of clinical and research experience, ensuring that postgraduate students receive the highest quality of education and mentorship.



## PROFESSIONAL DEVELOPMENT:

Our postgraduate programs not only focus on academic knowledge but also emphasize the development of critical skills such as clinical reasoning, effective communication, and ethical practice. We prepare our graduates to excel not only in their clinical roles but also as compassionate and ethical healthcare professionals.

## INTERDISCIPLINARY COLLABORATION

PUMHSW promotes interdisciplinary collaboration among postgraduate students and faculty. This fosters a holistic approach to healthcare, allowing students to gain insights from various disciplines and collaborate on complex healthcare challenges.

## COMMITMENT TO EXCELLENCE

The Postgraduate Department at PUMHSW is committed to upholding the highest standards of education, research, and clinical practice. We aim to produce postgraduates who are not only competent but also compassionate, ethical, and dedicated to improving the health and well-being of their communities.

## CONCLUSION

The Postgraduate Department at PUMHSW is a hub of academic excellence, research, and professional development. We are dedicated to nurturing the next generation of healthcare leaders and specialists, equipping them with the knowledge and skills needed to make a positive impact in the healthcare sector. Our commitment to excellence in education and research continues to drive innovation and contribute to the advancement of medical and healthcare sciences.





## MEDICAL EDUCATION DEPARTMENT OF PUMHSW

The Medical Education Department at People's University of Medical and Health Sciences for Women (PUMHSW) is dedicated to the enhancement of medical pedagogy and faculty development. Our department focuses on curriculum design, teaching methodologies, and assessment strategies to ensure that medical education meets the highest standards. We offer training and resources to faculty members to promote effective teaching practices. Additionally, we engage in research and innovation to continuously improve medical education. PUMHSW's Medical Education Department is committed to producing well-rounded, competent healthcare professionals and fostering a culture of lifelong learning among faculty and students, ultimately benefiting patient care and medical advancements.



## ADMISSION DEPARTMENT OF PUMHSW

The Admission Department at People's University of Medical and Health Sciences for Women (PUMHSW) is the gateway to academic opportunities and a future in healthcare. Our dedicated team manages the admissions process, providing guidance and assistance to prospective students. We ensure a fair and transparent selection process, welcoming talented individuals into our diverse academic community. The Admission Department at PUMHSW plays a crucial role in shaping the future of healthcare professionals by facilitating access to our various programs. Our commitment is to provide a smooth and supportive experience for applicants, enabling them to embark on their educational journey at PUMHSW with confidence and enthusiasm.

## ACADEMICS DEPARTMENT OF PUMHSW

The Academics Department at People's University of Medical and Health Sciences for Women (PUMHSW) is the heart of our institution's educational mission. We oversee and manage the academic programs, curriculum development, and educational policies. Our dedicated team ensures the highest standards of teaching and learning across various healthcare disciplines. We focus on fostering academic excellence, innovation in pedagogy, and continuous improvement in curricular offerings. The Academics Department at PUMHSW is committed to providing a dynamic and engaging learning environment for students, equipping them with the knowledge and skills needed to excel in their chosen fields of healthcare and contribute positively to society.

## EXAMINATION DEPARTMENT OF PUMHSW

The Examination Department at People's University of Medical and Health Sciences for Women (PUMHSW) is a pivotal component of academic governance. We are responsible for the planning, organization, and administration of examinations, ensuring fairness, integrity, and academic excellence. Our department plays a crucial role in maintaining academic standards, evaluating student performance, and awarding qualifications. We uphold strict confidentiality and adhere to established protocols, providing a level playing field for all students. The Examination Department at PUMHSW is committed to upholding the institution's reputation for academic rigor and integrity, fostering a conducive environment for learning, and facilitating the academic progression of our students.

## EXAMINATION CENTER UNDERGRADUATE AND POSTGRADUATE PUMHSW TESTING SYSTEM (PTS) CENTER





## FINANCE DEPARTMENT OF PUMHSW

The Finance Department at People's University of Medical and Health Sciences for Women (PUMHSW) is the backbone of financial management and stewardship. Our department is responsible for overseeing the institution's financial operations, budgeting, accounting, and fiscal planning. We ensure the efficient allocation of resources to support the university's mission, which includes education, research, and patient care. Our team of financial experts ensures compliance with regulatory guidelines and strives for transparency and accountability in all financial matters. The Finance Department at PUMHSW plays a critical role in sustaining the institution's financial health, enabling its growth, and ensuring the effective utilization of funds for the benefit of the university community.

## IT DEPARTMENT OF PUMHSW

The IT Department at People's University of Medical and Health Sciences for Women (PUMHSW) is at the forefront of technology integration in healthcare and education. We are responsible for managing and maintaining the institution's information technology infrastructure, ensuring seamless access to digital resources and facilitating efficient administrative and academic processes. Our dedicated team of IT professionals harnesses cutting-edge technology to support research, teaching, and patient care. We prioritize data security, network reliability, and innovation, playing a pivotal role in advancing the institution's mission. The IT Department at PUMHSW is committed to enhancing technological capabilities, promoting digital literacy, and contributing to the institution's growth and success.

## LIBRARY DEPARTMENT OF PUMHSW

The Library Department at People's University of Medical and Health Sciences for Women (PUMHSW) is a fundamental resource hub for academic excellence and research. Our library is a dynamic center for learning, providing students, faculty, and researchers with access to a vast collection of textbooks, journals, and digital resources related to medicine, healthcare, and allied fields. We offer a conducive learning environment, study spaces, and expert guidance to facilitate comprehensive research and knowledge acquisition. The Library Department at PUMHSW is committed to supporting the academic pursuits of our community, empowering future healthcare leaders, and fostering a culture of continuous learning and innovation.



## JPUMHS RESEARCH JOURNAL OF PUMHSW

The JPUMHS Research Journal at People's University of Medical and Health Sciences for Women (PUMHSW) is a distinguished platform for scholarly research and academic discourse. It serves as a medium for the dissemination of innovative and impactful research across various healthcare and medical disciplines. Our journal showcases cutting-edge research findings, critical reviews, and scientific contributions from faculty, students, and healthcare professionals. JPUMHS Research Journal fosters an environment of intellectual exploration and knowledge exchange, contributing to advancements in medical science, healthcare, and allied fields. It reflects PUMHSW's commitment to excellence in research and serves as a valuable resource for the global academic and scientific community.

## DEPARTMENT OF MEDICINE PUMHSW

The Department of Medicine at People's University of Medical and Health Sciences for Women (PUMHSW) stands as a cornerstone of healthcare excellence. Our department is dedicated to providing comprehensive medical care, encompassing diagnosis, treatment, and prevention of a wide spectrum of medical conditions. Our highly skilled and compassionate medical faculty and staff strive to deliver patient-centered care, emphasizing evidence-based practices and cutting-edge treatments. Additionally, the Department of Medicine plays a pivotal role in medical education, training the next generation of physicians to meet the evolving healthcare needs of our communities. We are committed to advancing medical knowledge through research and innovation, ensuring the highest standard of healthcare delivery. IT consists of 4 units with medical ICU. Gastroenterology of PUMHSW. We offer advanced diagnostic techniques, endoscopic procedures, and personalized treatment plans to manage a wide range of gastrointestinal issues, including gastrointestinal cancers, inflammatory bowel diseases, and liver diseases. Our department is dedicated to providing compassionate care, conducting research to advance gastroenterological knowledge, and training the next generation of gastroenterology specialists, contributing to the well-being of our patients and the field of gastroenterology.



## DEPARTMENT OF MEDICAL ICU PUMHSW

The Medical Intensive Care Unit (M-ICU) at People's University of Medical and Health Sciences for Women (PUMHSW) is an eight-bedded fully equipped critical care unit. Provide highly specialized care to critically ill patients, by our highly skilled medical staff, including intensivists, nurses, and support personnel, work tirelessly to monitor, diagnose, and treat patients with severe medical conditions.

Equipped with state-of-the-art technology, our ICU ensures the highest level of care, offering specialized interventions for a wide range of medical emergencies.





### DEPARTMENT OF PEDIATRICS PUMHSW

The Department of Pediatrics at People's University of Medical and Health Sciences for Women (PUMHSW) is a dedicated center of excellence in child healthcare. Our expert team of pediatricians and healthcare professionals is committed to providing comprehensive and compassionate care for infants, children, and adolescents. We specialize in the diagnosis, treatment, and prevention of a wide range of pediatric conditions, ensuring the well-being and development of our young patients. In addition to clinical expertise, our department actively contributes to pediatric research and medical education, training the next generation of pediatricians and advancing the frontiers of pediatric medicine. At PUMHSW's Department of Pediatrics, our mission is to promote the health and happiness of children, nurturing their growth into healthy adults.

### DEPARTMENT OF CARDIOLOGY PUMHSW

The Department of Cardiology at People's University of Medical and Health Sciences for Women (PUMHSW) is a leading center for cardiovascular care and research. Our expert team of cardiologists and healthcare professionals is dedicated to diagnosing, treating, and preventing heart-related conditions. We offer a comprehensive range of services, from advanced cardiac imaging to interventional cardiology procedures, ensuring that patients receive the highest standard of cardiovascular care. In addition to clinical excellence, our department actively engages in cardiovascular research and medical education, training future cardiologists and contributing to the advancement of cardiac medicine. At PUMHSW's Department of Cardiology, our mission is to promote heart health, improve patient outcomes, and drive innovation in cardiac care.



## DEPARTMENT OF NEUROLOGY PUMHSW

The Department of Neurology at People's University of Medical and Health Sciences for Women (PUMHSW) is a premier center of excellence dedicated to the diagnosis, treatment, and research of neurological disorders. Our team of skilled neurologists and healthcare professionals is committed to providing compassionate and cutting-edge care for patients with conditions affecting the nervous system, including neurological diseases, movement disorders, and neurodegenerative disorders. We offer state-of-the-art diagnostics and therapies to enhance the quality of life for our patients while actively participating in neurological research and medical education to advance our understanding of the field. At PUMHSW's Department of Neurology, our mission is to improve neurological health, provide exceptional care, and contribute to neurological knowledge.





## DEPARTMENT OF PSYCHIATRY PUMHSW

The Department of Psychiatry at People's University of Medical and Health Sciences for Women (PUMHSW) is a cornerstone of mental health care, dedicated to promoting psychological well-being and providing compassionate, evidence-based psychiatric services. Our team of experienced psychiatrists, psychologists, and mental health professionals is committed to diagnosing, treating, and supporting individuals with a wide range of mental health conditions. We offer a comprehensive array of services, from therapy and counseling to psychiatric medications and crisis intervention. Moreover, our department actively engages in psychiatric research and education, training future mental health experts and contributing to the advancement of psychiatric science. At PUMHSW's Department of Psychiatry, our mission is to enhance mental health, reduce stigma, and empower individuals to lead fulfilling lives.

## DEPARTMENT OF DERMATOLOGY PUMHSW

The Department of Dermatology at People's University of Medical and Health Sciences for Women (PUMHSW) is a renowned center for dermatological excellence. Our dedicated team of dermatologists and skin care professionals is committed to providing comprehensive care for skin, hair, and nail conditions. We offer a wide range of services, including diagnosis, treatment, and cosmetic dermatology procedures, utilizing state-of-the-art technology and evidence-based practices. Additionally, our department is actively involved in dermatological research and medical education, training the next generation of dermatologists and contributing to advancements in skin health. At PUMHSW's Department of Dermatology, our mission is to promote skin wellness and provide top-tier dermatological care to enhance the quality of life for our patients.

## DEPARTMENT OF ONCOLOGY PUMHSW

The Department of Oncology at People's University of Medical and Health Sciences for Women (PUMHSW) is a pivotal institution in the fight against cancer. Our accomplished team of oncologists, researchers, and healthcare professionals is dedicated to diagnosing, treating, and researching various forms of cancer. We offer a comprehensive range of oncology services, including advanced cancer therapies, precision medicine, and supportive care, all tailored to the individual needs of our patients. Additionally, our department is deeply committed to cancer research and medical education, equipping the next generation of oncologists and contributing to ongoing breakthroughs in cancer treatment. At PUMHSW's Department of Oncology, our mission is to provide exceptional cancer care, advance scientific knowledge, and make strides towards a cancer-free future.

## DEPARTMENT OF NEPHROLOGY PUMHSW

The Department of Nephrology at People's University of Medical and Health Sciences for Women (PUMHSW) is a specialized hub for kidney care and renal health. Our team of dedicated nephrologists and healthcare professionals is committed to diagnosing, treating, and preventing kidney-related conditions. We provide comprehensive services, including kidney disease management, dialysis, and kidney transplantation, employing state-of-the-art technology and evidence-based practices to ensure the best possible outcomes for our patients. Additionally, our department actively engages in nephrology research and medical education, training the next generation of kidney specialists and contributing to advancements in renal medicine. At PUMHSW's Department of Nephrology, our mission is to safeguard kidney health, improve patient well-being, and lead innovations in nephrological care.

## DEPARTMENT OF SURGERY PUMHSW

The Department of Surgery at People's University of Medical and Health Sciences for Women (PUMHSW) consists of 03 units is a premier institution dedicated to surgical excellence and patient care. Our department is staffed by a team of accomplished surgeons and healthcare professionals who provide a wide range of surgical services, from general surgery to specialized procedures. We are committed to delivering state-of-the-art surgical care with a focus on patient well-being and safety. In addition to clinical expertise, our department actively promotes surgical research and education, training future generations of surgeons and contributing to advancements in surgical techniques and knowledge. At PUMHSW's Department of Surgery, our mission is to provide exceptional surgical care, advance medical science, and shape the future of surgical practice.



## DEPARTMENT OF ANESTHESIOLOGY PUMHSW

The Department of Anesthesiology at People's University of Medical and Health Sciences for Women (PUMHSW) is a critical pillar of perioperative care and pain management. Our expert team of anesthesiologists and anesthesia professionals is dedicated to ensuring the safety, comfort, and well-being of patients undergoing surgical procedures. We employ state-of-the-art anesthesia techniques and monitoring to provide optimal perioperative care. Additionally, our department actively engages in research, education, and training, preparing the next generation of anesthesiologists and contributing to advancements in the field. At PUMHSW's Department of Anesthesiology, our mission is to deliver exceptional anesthesia care, alleviate pain, and enhance surgical outcomes.





## DEPARTMENT OF SURGICAL ICU AND PAIN MANAGEMENT PUMHSW

The Surgical Intensive Care Unit (S-ICU) at People's University of Medical and Health Sciences for Women (PUMHSW) is a critical department dedicated to providing advanced, specialized care to critically ill patients. Our highly skilled medical staff, including intensivists, nurses, and support personnel, work tirelessly to monitor, diagnose, and treat patients with severe medical conditions. Equipped with state-of-the-art technology, our ICU ensures the highest level of care, offering specialized interventions for a wide range of surgical and trauma emergencies. The Pain Management Center PUMHSW provides care to chronic pain patients as well as acute post-surgical pain patients from almost five districts. Throughout the province of Sindh, this is the only public pain center recognized for fellowship in pain management.

## DEPARTMENT OF ORHTOPEDICS PUMHSW

The Department of Orthopedic Surgery at People's University of Medical and Health Sciences for Women (PUMHSW) is a distinguished center of excellence in musculoskeletal care. Our dedicated team of orthopedic surgeons and healthcare professionals is committed to providing top-notch orthopedic services, specializing in the diagnosis, treatment, and rehabilitation of a wide range of musculoskeletal conditions. From joint replacements to sports injuries and spinal disorders, we offer advanced surgical techniques and evidence-based treatments. Additionally, our department actively engages in research and education, training future orthopedic specialists and contributing to the ongoing advancements in orthopedic medicine. At PUMHSW's Department of Orthopedic Surgery, our mission is to enhance mobility and improve the quality of life for our patients while advancing the field of orthopedics.

## DEPARTMENT OF GYNECOLOGY PUMHSW

The Department of Gynecology at People's University of Medical and Health Sciences for Women (PUMHSW) is a leading center for women's healthcare and reproductive well-being. Our team of experienced gynecologists, obstetricians, and women's health specialists is dedicated to providing comprehensive care for women of all ages. We offer a wide range of gynecological services, including routine check-ups, reproductive health care, prenatal and postnatal care, and advanced gynecological surgeries. Additionally, our department actively engages in research and medical education, training future gynecologists and contributing to the advancement of women's health knowledge. At PUMHSW's Department of Gynecology, our mission is to empower women, ensure their reproductive health, and provide compassionate and personalized care.



## DEPARTMENT OF NEUROSURGERY PUMHSW

The Department of Neurosurgery at People's University of Medical and Health Sciences for Women (PUMHSW) is a leading center for advanced neurosurgical care and innovation. Our accomplished team of neurosurgeons and healthcare professionals specializes in the diagnosis, treatment, and surgical management of complex neurological conditions. We provide state-of-the-art surgical interventions for patients with brain and spine disorders, utilizing cutting-edge technology and minimally invasive techniques. In addition to clinical excellence, our department is actively engaged in neurosurgical research and medical education, training the next generation of neurosurgeons and contributing to advancements in the field. At PUMHSW's Department of Neurosurgery, our mission is to improve neurological health, enhance patient outcomes, and pioneer advances in neurosurgical medicine.

## DEPARTMENT OF UROLOGY PUMHSW

The Department of Urology at People's University of Medical and Health Sciences for Women (PUMHSW) is a leading center for comprehensive urological care. Our dedicated team of urologists and healthcare professionals is committed to diagnosing, treating, and preventing a wide range of urological conditions, including kidney stones, urinary tract infections, and urological cancers. We offer state-of-the-art diagnostics and advanced surgical interventions to ensure the highest quality of care for our patients. Additionally, our department is actively engaged in urological research and medical education, training the next generation of urologists and contributing to advancements in urological medicine. At PUMHSW's Department of Urology, our mission is to promote urological health, improve patient well-being, and lead innovations in urological care.





## DEPARTMENT OF OPHTHALMOLOGY PUMHSW

The Department of Ophthalmology at People's University of Medical and Health Sciences for Women (PUMHSW) is a leading center for eye care and vision health. Our team of skilled ophthalmologists, optometrists, and eye care professionals is dedicated to preserving and enhancing the visual well-being of our patients. We offer a comprehensive range of eye services, including vision exams, cataract surgery, glaucoma management, and treatment for various eye conditions. Our department is also actively involved in ophthalmic research and medical education, training the next generation of eye care specialists and contributing to the advancement of eye health knowledge. At PUMHSW's Department of Ophthalmology, our mission is to provide exceptional eye care, promote vision health, and lead innovations in ophthalmic medicine.

## DEPARTMENT OF ENT PUMHSW

The Department of Ear, Nose, and Throat (ENT) at People's University of Medical and Health Sciences for Women (PUMHSW) is a premier institution dedicated to comprehensive ear, nose, and throat care. Our team of experienced otolaryngologists and healthcare professionals specializes in diagnosing and treating a wide range of ENT disorders, including hearing loss, sinusitis, voice disorders, and head and neck cancers. We provide cutting-edge diagnostic and treatment options, ensuring the highest quality of care for our patients. Additionally, our department is actively engaged in ENT research and medical education, training the next generation of specialists and contributing to advancements in ENT medicine.



## SKILL LAB DEPARTMENT OF PUMHSW

The Skill Lab Department at People's University of Medical and Health Sciences for Women (PUMHSW) is a vital component of experiential learning and skill development. Our state-of-the-art Skill Lab provides students across various healthcare disciplines with a hands-on training environment to practice and enhance clinical and procedural skills. We offer realistic medical simulations, advanced equipment, and expert guidance, allowing students to gain confidence and proficiency in patient care techniques. The Skill Lab Department at PUMHSW is committed to preparing future healthcare professionals to deliver safe and competent care in real-world healthcare settings. We prioritize hands-on learning, clinical competence, and patient safety, ensuring students are well-prepared for their professional careers. This is the department of public sector university recognized for AHABLS and ACLS workshops certification acceptable throughout Pakistan and Internationally.



## DEPARTMENT OF RADIOLOGY PUMHSW

The Department of Radiology at People's University of Medical and Health Sciences for Women (PUMHSW) is a pivotal hub for advanced medical imaging and diagnostic services. Our skilled team of radiologists and healthcare professionals utilizes cutting-edge technology to provide accurate and timely diagnostic information for various medical conditions. We offer a comprehensive range of imaging modalities, including X-rays, CT scans, MRI scans, ultrasound, and nuclear medicine, enabling precise diagnosis and treatment planning. Our department plays a crucial role in patient care, providing vital information to physicians while ensuring the highest standards of safety and accuracy. At PUMHSW's Department of Radiology, our mission is to support healthcare excellence through state-of-the-art imaging and diagnostics.

## DEPARTMENT OF AUDIOLOGY PUMHSW

The Department of Audiology at People's University of Medical and Health Sciences for Women (PUMHSW) is a specialized center dedicated to the assessment, diagnosis, and management of hearing and balance disorders. Our expert team of audiologists and hearing healthcare professionals is committed to providing comprehensive audiological services, including hearing evaluations, hearing aid fittings, balance assessments, and rehabilitation for individuals of all ages. We utilize state-of-the-art technology and evidence-based practices to deliver personalized care and improve the quality of life for those with hearing and balance challenges. At PUMHSW's Department of Audiology, our mission is to promote hearing health, enhance communication, and ensure that every individual enjoys the benefits of sound and balance.



## DEPARTMENT OF PEADS SURGERY PUMHSW

The Department of Pediatric Surgery at People's University of Medical and Health Sciences for Women (PUMHSW) is a specialized center dedicated to providing expert surgical care to infants, children, and adolescents. Our experienced team of pediatric surgeons and healthcare professionals is committed to delivering compassionate, state-of-the-art surgical interventions for a wide range of pediatric conditions, including congenital anomalies, pediatric trauma, and complex surgical cases. We prioritize the unique needs of young patients, offering specialized surgical techniques and a child-centered approach to healthcare. Additionally, our department actively engages in pediatric surgical research and medical education, training the next generation of pediatric surgeons while contributing to advancements in pediatric surgical care.



## DEPARTMENT OF ANATOMY PUMHSW

The Department of Anatomy at People's University of Medical and Health Sciences for Women (PUMHSW) is a foundational pillar of medical education and research. Our department plays a crucial role in imparting a comprehensive understanding of the human body's structure and function to medical students. We offer cutting-edge anatomical education, including cadaveric dissection, histology, and modern imaging techniques. Additionally, our department is actively engaged in anatomical research, contributing to the advancement of medical knowledge. At PUMHSW's Department of Anatomy, our mission is to provide a strong anatomical foundation, nurture future healthcare professionals, and drive innovations in medical research and education.

## DEPARTMENT OF PHYSIOLOGY PUMHSW

The Department of Physiology at People's University of Medical and Health Sciences for Women (PUMHSW) is a vital institution at the intersection of medical education and scientific research. Our department is dedicated to unraveling the intricacies of human physiological processes and teaching the next generation of healthcare professionals. We provide students with a profound understanding of how the human body functions, emphasizing the principles that underlie health and disease. Additionally, our faculty actively engages in physiological research, contributing to medical advancements. At PUMHSW's Department of Physiology, our mission is to foster a deep appreciation for the complexities of the human body, prepare future healthcare leaders, and contribute to the ever-evolving field of medical science.



## DEPARTMENT OF BIOCHEMISTRY PUMHSW

The Department of Biochemistry at People's University of Medical and Health Sciences for Women (PUMHSW) serves as the cornerstone of biomedical research and education. Our department is dedicated to unraveling the molecular mechanisms governing life processes and training the future leaders of healthcare and research. We provide students with a profound understanding of the biochemical foundations of health and disease. Our faculty is actively engaged in cutting-edge biochemical research, contributing to advancements in medicine and biology. At PUMHSW's Department of Biochemistry, our mission is to instill a deep understanding of biochemical principles, prepare students for careers in healthcare and research, and actively contribute to the ever-expanding body of knowledge in the field of biochemistry.

## DEPARTMENT OF PHARMACOLOGY PUMHSW

The Department of Pharmacology at People's University of Medical and Health Sciences for Women (PUMHSW) is dedicated to the study of drugs and their effects on living organisms. Our department serves as a vital link between basic science research and clinical medicine. We explore how medications interact with the body, their mechanisms of action, and their safety and efficacy. Pharmacologists at PUMHSW play a critical role in drug development, ensuring that new treatments are effective and safe for patients. We educate future healthcare professionals on the proper use of medications and engage in research to advance pharmaceutical knowledge. Our mission is to optimize drug therapy, improve patient care, and contribute to the advancement of medical science.



## DEPARTMENT OF PATHOLOGY PUMHSW

The Department of Pathology at People's University of Medical and Health Sciences for Women (PUMHSW) serves as the cornerstone of diagnostic medicine and medical research. Our department is dedicated to the meticulous analysis of tissues, cells, and bodily fluids to unravel the complexities of disease processes. Pathologists at PUMHSW play a pivotal role in patient care by providing accurate diagnoses, which guide treatment decisions. Additionally, our faculty actively engages in cutting-edge research to advance our understanding of diseases and contribute to medical knowledge. At PUMHSW's Department of Pathology, our mission is to deliver precise diagnostics, foster research excellence, and educate future pathologists, ultimately improving healthcare outcomes for our patients.

## DEPARTMENT OF MEDICAL JURICPRUDENCE AND FORENSIC MEDICINE PUMHSW

The Department of Medical Jurisprudence and Forensic Medicine at People's University of Medical and Health Sciences for Women (PUMHSW) is a critical component of legal and medical systems, bridging the gap between medicine and the law. Our department focuses on the application of medical knowledge to legal matters, particularly in cases involving injury, violence, or suspicious deaths. We train future forensic experts to investigate and provide expert testimony in court, ensuring justice and truth in legal proceedings. Additionally, our faculty engages in research to advance forensic science, contributing to the development of effective investigative techniques. At PUMHSW, our mission is to uphold the principles of justice and accountability through the practice and education of medical jurisprudence and forensic medicine.

## DEPARTMENT OF COMMUNITY HEALTH SCIENCES PUMHSW

The Department of Community Health Sciences at People's University of Medical and Health Sciences for Women (PUMHSW) is dedicated to promoting public health and community well-being. Our department focuses on understanding the social, environmental, and behavioral factors that influence health outcomes. We engage in research, education, and community outreach to address public health challenges and develop effective strategies for disease prevention and health promotion. Community Health Sciences at PUMHSW equips students with the knowledge and skills to make a positive impact on the health of communities. Our mission is to create healthier societies, reduce health disparities, and contribute to the overall well-being of individuals and populations.





The attached Peoples Medical college hospital has total bed strength of 1400 at present. The hospital is facilitated with the most modern equipment and medical gadgetry. There are 10 centrally air-conditioned operation theatres. OLD-and new OPD cum causality blocks consisting of medical surgical Paeds, ENT, Eye, Gynae Obs. Chest cardiology, Skin, Psychiatry, Neurosurgery, Urology, Pediatrics, Surgery, Ultra-sonography. MRI and CT scanning lab, having well organized pathological lab to cater all modern diagnostic facilities, have been providing services to the locality. MRI facilities will be provided very soon. New accident and emergency and three hundred bedded mothers and child health care. MCHC centers are under progressive construction. Benazir institute of urology and transplantation is near completion and trauma center is also newly constructed and has started functioning rural health center at Punhal Khan Chandio.





### BEGUM BILQUEES SULTANA INSTITUTE OF NURSING

In December 2012, the Peoples University of Medical & Health Sciences for Women Shaheed Benazir Abad started its nursing institute. The first-ever public sector institute established in Pakistan, Begum Bilquees Sultana Institute of Nursing is named after the honorable mother of His Excellency Former President Asif Ali Zardari. Its mission is to educate deserving female students in nursing so they can treat patients with the necessary skill and compassion. Female students from all around the county are drawn to it. The nursing institute has relocated to the newly built nursing institution building on the university's current site. The institute is properly outfitted with all required tools, including a skill lab that meets current standards.

### INSTITUTE OF PHYSIOTHERAPY & REHABILITATION SCIENCES

At People's University of Medical & Health Sciences for Women, Shaheed Benazir Abad, the Institute of Physiotherapy & Rehabilitation Sciences was founded in December 2012. This Institute was urgently needed to provide high-quality medical training in the areas of physical therapy, occupational therapy, and speech-language pathology for recovering from serious injuries, illnesses, and surgeries. The PUMHS ICU also offers pain management services under the direction of a highly skilled team in pain medicine. Since its founding, the Institute of Physiotherapy & Rehabilitation Sciences has been providing students with exceptional services. This institute provides a five-year DPT degree in physiotherapy that also incorporates practical physiotherapy expertise.







The Institute of Pharmaceutical Sciences was founded in 2014. The goals of this college are to deliver pharmacy education to ladies living in the remote regions of the province of Sindh right at their doorstep. The females who are travelling from outside and other regions of the country will also be able to receive an education thanks to this institute. The Institute of Pharmaceutical Sciences is situated in a recently built structure on the university's campus. Pharm D courses are available through the Institute of Pharmaceutical Sciences.

The following subjects will be covered by the institute's instruction: the fundamentals of all drug classes; monitoring medication effects in people; ways for measuring drug concentrations through analysis; the fundamentals and use of therapeutic drug monitoring;

Age, sex, genetics, condition, and ethnicity are some of the characteristics that might affect how a medicine will affect a patient. pharmacokinetics, drug metabolism, elimination, and biotransformation; methods for identifying and evaluating medication side effects; Toxicology; design, measurement, and analysis of the research; Biostatistics; human experimentation's ethical and legal implications; Drug utilization systems; Drug development, licensing, production, and restrictions; addiction to drugs and/or alcohol; grasp drug use behaviors and compliance requires a grasp of behavioral theories and concepts.







# INSTITUTE OF PUBLIC HEALTH

Community Medicine Department imparts Medical Education which enables the Medical students to appreciate Disease, not just in an individual patient but to also have a holistic approach regarding the spectrum of disease in the whole of community. In the community medicine Department field visits of the places of Public health importance, household surveys and research work are being arranged regularly. Teaching faculty of the department is highly qualified and dedicated for learning of students and shares their experiences. In the field of contemporary health care, 'Community Medicine' is a well-recognized discipline that aims to train health professionals in combating community / public health related issues.

The Institute will impart the education in following programs;

1. BSPH
2. MBBS
3. M. Phil
4. MPH
5. MSPH





The Hostel Department at People's University of Medical and Health Sciences for Women (PUMHSW) is dedicated to providing safe and comfortable accommodation for students. Our hostels offer a secure and welcoming environment, ensuring that students can focus on their studies and personal growth. We prioritize cleanliness, security, and a supportive community atmosphere. The Hostel Department at PUMHSW plays a crucial role in promoting a conducive living environment for students, fostering a sense of belonging and facilitating a balanced academic and social life. Our commitment is to provide a home away from home, allowing students to thrive in their academic pursuits and personal development.







This university is permanently recognized by PM&DC and HEC for postgraduate courses including FCPS and MS general surgery Gynae and Obs, ENT, Neurosurgery, Ophthalmology, Urology, Orthodaedics, Pediatric surgery, Anesthesiology, and MD medicine, Pediatrics, Cardiology, Neurology & Psychiatry, diploma courses like, DCP, DGO, DCH, DIP card, DO, DTCD, DCN, DPM, DMRD, DMRT, DA, DLO, DMJ, and MCPS training in Gynecology and Obstetrics, Ophthalmology, Otorhinolaryngology, Anesthesiology, Pediatrics, and other specialties are regularly conducted at PUMHSW Shaheed Benazir Abad. PUMHS also offers second fellowship in pain medicine. M. Phil anatomy, M. Phil Physiology, Phil Biochemistry, M. Phil Histo-pathology, M. Phil Microbiology, M. Phil Pharmacology, M. Phil Community Medicine, MSPH Master of science in Public Health are regularly conducted at PUMHS Nawabshah SBA. The postgraduate examination comprises with OSPE, OSCE long and short cases. A modern CPSP regional center is also discharging its academic obligations under MOU with PUMHSW in the very premises of this university which is fully air-conditioned with digital library and internet facilities and multipurpose hall.



# DEGREE PROGRAMMES/ FELLOWSHIP/ DIPLOMAS



| S. No. | Course   | speciality / Program          | Duration of Course |
|--------|----------|-------------------------------|--------------------|
| 1      | D.A      | Anaesthesiology               | 2                  |
| 2      | D.O      | Ophthalmology                 | 2                  |
| 3      | DCH      | Paeds Medicine                | 2                  |
| 4      | DCN      | Clinical Neurology            | 2                  |
| 5      | DCP      | Clinical Pathology            | 2                  |
| 6      | DGO      | Gynae & Obstetrics            | 2                  |
| 7      | Dip-Card | Cardiology                    | 2                  |
| 8      | DLO      | ENT                           | 2                  |
| 9      | DMJ      | Forensic Medicine             | 2                  |
| 10     | DMRD     | Radiology                     | 2                  |
| 11     | DMRT     | Oncology                      | 2                  |
| 12     | DPM      | Psychiatry Medicine           | 2                  |
| 13     | DTCD     | Tuberculosis & Chest Diseases | 2                  |
| 14     | FCPS-II  | Anaesthesiology               | 4                  |
| 15     | FCPS-II  | Pain Medicine                 | 2                  |
| 16     | FCPS-II  | ENT                           | 4                  |
| 17     | FCPS-II  | Eye                           | 4                  |
| 18     | FCPS-II  | General Medicine              | 4                  |
| 19     | FCPS-II  | General Surgery               | 4                  |
| 20     | FCPS-II  | Gynae & Obstetrics            | 4                  |
| 21     | FCPS-II  | Neurology                     | 4                  |
| 22     | FCPS-II  | Neurosurgery                  | 4                  |
| 23     | FCPS-II  | Paeds Medicine                | 4                  |
| 24     | FCPS-II  | Paeds Surgery                 | 4                  |
| 25     | FCPS-II  | Psychiatry                    | 4                  |





| S. No. | Course | speciality / Program | Duration of Course |
|--------|--------|----------------------|--------------------|
| 26     | M.D    | Cardiology           | 5                  |
| 27     | M.D    | General Medicine     | 4                  |
| 28     | M.D    | Paeds Medicine       | 4                  |
| 29     | M.Phil | Anatomy              | 2                  |
| 30     | M.Phil | Biochemistry         | 2                  |
| 31     | M.Phil | Community Medicine   | 2                  |
| 32     | M.Phil | Histopathology       | 2                  |
| 33     | M.Phil | Microbiology         | 2                  |
| 34     | M.Phil | Pharmacology         | 2                  |
| 35     | M.Phil | Physiology           | 2                  |
| 36     | M.S    | Anaesthesiology      | 4                  |
| 37     | M.S    | Otorhinolaryngology  | 4                  |
| 38     | M.S    | Ophthalmology        | 4                  |
| 39     | M.S    | General Surgery      | 4                  |
| 40     | M.S    | Gynae & Obstetrics   | 4                  |
| 41     | M.S    | Neurosurgery         | 5                  |
| 42     | M.S    | Orthopaedics         | 5                  |
| 43     | M.S    | Paeds Surgery        | 5                  |
| 44     | M.S    | Urology              | 5                  |
| 45     | MCPS   | Anaesthesiology      | 2                  |
| 46     | MCPS   | Ophthalmology        | 2                  |
| 47     | MCPS   | Gynae & Obstetrics   | 2                  |
| 48     | MCPS   | Paeds Medicine       | 2                  |
| 49     | MSPH   | Community Medicine   | 2                  |



1. MBBS from any of the recognized University as mentioned in schedule I & II of Pakistan Medical & Dental Council Act.
2. Valid Registration with PM&DC as Medical Practitioner.
3. One Year Resident House Job in PM&DC recognized institute.
4. For M. Phil. Courses: MBBS with valid PM&DC registration & one year resident house job in PM&DC recognized institute.
5. For MSPH: (MBBS / BDS/ BSPH/ Bsc. Nursing). MBBS / BDS with one-year Resident House job in a PM&DC recognized teaching institution and valid registration with PM&DC as Medical / Dental Practitioner. Bsc. Nursing graduates registered with Pakistan Nursing Council. BSPH/ (4 years' graduation) from Recognized Higher Education Commission Institution with Internship Certificate in any.
6. D.M.J: MBBS with two years teaching experience as lecturer in the Department of Forensic Medicine in any of recognized Medical College / University or two years' experience as M.O / W.M.O in RHC/THQ/DHQ/Teaching Hospital / Causality Department / Police Surgeons Office / Clinical Examiner Lab, Forensic Lab. Or 02 years Clinical Forensic experience after graduation.
7. Note: Fresh Candidates can also apply but priority should be given to in-service candidates.
8. For M. Phil. Community Medicine Course: MBBS with One Year Resident House job in a PM&DC recognized teaching institution and valid registration with PM&DC as Medical Practitioner.
9. Foreign Graduate will have to produce Equivalent Certificate of their Degree from PM&DC.
10. One candidate can not apply for more than one Degree or Diploma Course of two different Disciplines at the same time.
11. One candidate can apply for both the Degree and Diploma Course in the same speciality.
12. A separate Application Form to be submitted for each course or training program.
13. MCPS registered trainee will not be offered training in FCPS of same discipline until equivalent MCPS.
14. The university reserves the rights to change the rules and regulations for Postgraduate studies from time to time.

In-service Candidates will have to obtain No Objection Certificate (NOC) from the Employer while applying for in Postgraduate Course however they can send / submit advance copy along with relevant Documents.

## ENROLLMENT

Each Postgraduate student so selected shall be required for enrolment through the office of the Registrar; PUMHS, Shaheed Benazir Abad within one month from the date of issuance of admission notification and depositing prescribed fee, failing which the admission of the selected PG candidate shall be deemed as cancelled.

## PM&DC REGISTRATION

It is necessary for every Postgraduate trainee to register himself as a Postgraduate student with Pakistan Medical & Dental Council Islamabad, within three months of joining to the training.

## GENERAL INFORMATION

- 1). The post graduate admission induction of new Candidates will be twice a year from 2016 onwards in the months of March and September, for clinical Sciences. However, it will be only once a year in the month of September for Basic Sciences.
- 2). Admission process shall be made through Postgraduate Medical Center, PUMHS Shaheed Benazir Abad in the courses which meet recognition criteria of PM&DC & HEC.
- 3). The prospectus with application Form for all Courses can be obtained from the office of the Director Postgraduate Medical Centre Nawabshah, on payment of non-refundable fee of PKR 3000/- (Rupees Three Thousands only) through challan form to be paid in HBL, PMC Branch, Nawabshah and to be submitted at the Postgraduate Medical Centre, Nawabshah.
- 4). Application form can be downloaded from [www.pumhs.edu.pk](http://www.pumhs.edu.pk) and to be submitted duly filled in at Post Graduate Medical Centre PUMHS along with required documents and supported with Bank Challan / Pay order of Rs. 3000/- for Prospectus and examination fees as mentioned in fees scheduled of different courses in favor of Director Post Graduate Studies, PUMHS Nawabshah. SBA

### 5. EXAMINATION FEE SCHEDULE OF DIFFERENT DISCIPLINES/COURSES

|  |                              |
|--|------------------------------|
| <b>M.D / M.S. Part-1 Examination</b>     | <b>Rs. 20,000/- per exam</b> |
| <b>M.S / M.D Part-II Examination</b>     | <b>Rs. 20,000/- per exam</b> |
| <b>M.T.A in M.D / M.S Examination</b>    | <b>Rs. 15,000/- per exam</b> |
| <b>Diploma Courses All</b>               | <b>Rs. 10,000/- per exam</b> |
| <b>Entry Test for All Diplomas/MCPS.</b> | <b>Rs. 5,000/- once only</b> |
| <b>Entry Test for MSPH, M PHILL</b>      | <b>Rs. 5,000/- once only</b> |



- 6). Applicant candidates will have to appear in written test and interview before the admission. The final Selection will be on the merit, the cumulated marks of entry test result and additional marks will be as under;
  - i). Rural service 02 marks per year (Maximum 10 marks)
  - ii). Position in MBBS 01 marks per position per professional year.
  - iii). Extra qualification 02 marks per qualification.
  - iv). Publication in the medical journal 02 marks for first three authors and 01 mark other than the first three authors.

In case more than one candidate secures equal marks, will be decided on merit of final professional examination. If still there is equal status/ marks then the preference will be given to the older age candidate.

The PGMC will formulate the details of procedure, format and schedule of written test.

The final selection list of all successful candidates admitted in various postgraduate courses will be finalized on merit by the Director Postgraduate Medical Centre PUMHS Shaheed Benazir Abad.

After selection to a program, private candidate shall report for joining to the PGMC within Two (02) weeks, if they fail to do so within this period, their selection shall stand cancelled.

After selection to a program, in-service candidates will have to obtain permission/ study leave/deputation from the employer and shall be relieved off from their parent departments / institute before joining the course within Three (03) months. If they failed to do so within this period, their selection shall stand cancelled.

It is mandatory for in-service candidates to apply for admission through proper channel / their employer. The application Forms for the Postgraduate Admission of in-service candidates will not be entertained without NOC/Permission of their parent department. Though, to appear in admission test advance copy can be submitted.

No separate call letters will be issued for entry test. The candidates are advised to note the important dates given in this document. However, PGMC reserves the right to make any modification in the schedule which will be informed to the candidates.

The PGMC reserve the right to change the Rules for Postgraduate studies as deemed necessary to improve the training program.

## THE PROGRAM OF STUDY

The duration of each degree / Diploma course / training program is given separately. The period of the course will be calculated from the date of joining. The candidates having completed training for specified period of Post Graduate training in the same subject may obtain maximum exemption of one year in that particular Degree / Diploma course.





The Honorable Vice Chancellor, in exercise of powers conferred by Section (13/5) “**The Peoples University of Medical & Health Sciences for Women, SBA MD/MS Rules and Regulations**” are notified on behalf of Syndicate for section (32)(1).

### **SHORT TITLE, COMMENCEMENT AND APPLICATION**

- a) These regulations may be called the PUMHS Post graduate level-III & IV Degree Courses MS/MD amended Regulations 2023.
- b) They shall come into force at once and shall apply to all students/candidates who intend to do Post graduate Degree courses like, MD/MS from PUMHSW Shaheed Benazir Abad.
- c) By development and adhering to these rules and regulations, the medical University PUMHSW will ensure that the admission process for the Postgraduate clinical degrees remains transparent, fair and effective, and that students are provided with a conducive environment for learning and growth.

### **DEFINITION:**

In these regulations, unless the context otherwise requires, the following expression shall have the meaning hereby respectively assigned to them that is to say:

- a) AS& RB: means Advance Studies & Research Board.
- b) Candidates Training Portfolio means a professional development portfolio to track progress in the training program. It shall consist of a record of acquisition of knowledge, skills and attitudes.
- c) Continuous Internal Assessments(CIS) means workplace based assessments, candidate’s training portfolio assessment and supervisor’s annual review report on these assessments.
- d) Core Curriculum means Course of study which is deemed central and usually made mandatory for all students of MD or MS Degree Programs in various disciplines.
- e) Curriculum means the set of course and its content.
- f) Deans Committee will consist of all the deans and the quorum will be one third.
- g) Director PGMC means Director Post graduate medical courses.
- h) Error Investigation means medical error investigation which involves defining the problem; identifying the cause (analysis) and selecting the best solution (reduce the risk).
- i) Examiner means Examiner of Theory and Practical/oral examinations of MD/MS programs.
- j) External Examiner means the examiner who is not teaching (or has not taught during the academic year) candidates of MD/MS programs in this university.
- k) Generic Competencies means the qualities or state of being functionality adequate or having sufficient knowledge, judgement, skills or strengths which are applicable to a whole class or group.
- l) Government means Government of Sindh.



- m) Hippocratic Oath means an Oath historically taken by Physicians and other healthcare professionals swearing to practice medicine honestly.
- n) MTAE means mid term Assessment Examination to be held after 2 years of enrollment in PG course.
- o) MD means Doctor of Medicine
- p) MS means Master of Surgery
- q) Paper setter means paper setter for written papers of MD/MS examinations.
- r) Practice Based Learning (PBL) means the process of learning to use scientific evidence related to patient's health problems and the ability to interpret medical literature.
- s) Program means each and every component of training for PUMHSW degrees of MD/MS.
- t) Program Format means the whole plan of training and assessment for MD/MS Degrees and this shall be reflected to as program format.
- u) Root cause analysis(RCA) means a method of problem solving that tries to identify the root cause of faults or problems that cause operating events.
- v) Specially specific competency means the qualities or states of being functionality adequate or having sufficient knowledge, judgment, skills or strengths which are applicable to the relevant specially of training.
- w) Supervisor means supervisor for overall conduct of his own speciality in MD/MS Degree programs.
- x) Supervisor's Evaluation Proforma means supervisor's Evaluation Proforma for Continious Internal Assessments.
- y) System Based Practice means competency of a resident to understand how patient care relates to the health care system as a whole and how to use the system to improve the quality and safety of patient care.
- z) System Thinking means an approach to problem solving, by reviewing "problems" as parts of an overall system, rather than reacting to specific part, outcomes or events in isolation and potentially contributing to further development of unintended consequences, System thinking focus on cyclical rather than linear and effect.
- aa) Thesis means MD/MS thesis written as long essay or dissertation based on university approved research project.
- ab) Training Program means training of medical in achieving generic and specially specific competencies for their chosen discipline, leading to Postgraduates degree of MD/MS Program.
- ac) University means PUMHSW University.
- ad) Workplace Based Assessments means assessment of generic and speciality of candidates training portfolio.
- ae) Board Of Studies(BOS) means Board of Studies as per charter of PUMHSW University.
- af) Advanced Studies and Research Board(AS&RB) means Advanced Studies and Research Board as per charter of PUMHSW University.



## RULES FOR THE PAYMENT OF FEES:



1. All the fees once deposited are non-refundable/ adjustable.
2. Fee for 1st year should be deposited within three days of admission and if not deposited within stipulated time, admission is liable to be cancelled.
3. Fees for remaining years will have to be paid within one week of start of each academic year.
4. In case, the fees are not deposited during the given time, late fee charges are Rs. 1000/= per month will be charged.
5. The fee is subject to revision by the university/ government at any time; however, the already admitted students shall pay their fees according to the schedule given in to respective prospectus of the admission year.
6. The student who fails to clear his/her dues within stipulated time period, his/her exam form will not be forwarded to controller of examination and shall not be allowed to appear in the examination.

### Fees Schedule of Postgraduate Candidates of PUMHSW SBA is as under

| <b>During Admissions Entry Test / Examination Fee for Pakistani Candidates</b> |                        |
|--|------------------------|
| Prospectus Fee for all courses (one time only)                                 | Rs. 3000/-             |
| Curriculum Fees  | Rs. 2000/-             |
| For All Diploma, MCPS, MSPH & M.Phil only one time                             | Rs. 5000/-             |
| MD / MS Part-I only one time   | Rs. 15000/-            |
| <b>After Admissions Examination Fee For Postgraduate Candidates</b>            |                        |
| MD / MS Part-II  | Rs. 20,000/- per exam. |
| MTA (Mid Term Assessment)  | Rs. 15,000/- per exam. |
| For All Diploma, MCPS, MSPH & M.Phil (Part-I & II)                             | Rs. 10,000/- per exam  |
| <b>Annually Admission Fee Schedule for Pakistani Candidates</b>                |                        |
| Degree Courses   | Rs. 50,000/- per year  |
| Diploma / MCPS Courses   | Rs. 25,000/- per year  |
| Diploma Courses on Self Finance Basis  | Rs. 100,000/- per year |
| M.Phil / MSPH  | Rs. 25,000/- per year  |
| FCPS Part-II   | Rs. 10,000/- per year  |
| Second Fellowship  | Rs. 30,000/- per year  |



## ANNUALLY ADMISSION FEE SCHEDULE FOR OVERSEAS CANDIDATES

|                    |                            |
|--------------------|----------------------------|
| M.S / M.D (Part-I) | 5,000\$ (Dollars) Per Year |
| Diploma / MCPS     | 2,500\$ (Dollars) Per Year |
| M.Phil / MSPH      | 2,500\$ (Dollars) Per Year |

## MISC: FEES

|                            |                              |
|----------------------------|------------------------------|
| All Four (4) Workshops Fee | Rs. 48,000/-                 |
| Identity Card              | Rs. 300/-                    |
| Enrollment Fees            | Rs. 500/-                    |
| Registration Fees          | Rs. 700/-                    |
| Experience Certificate     | Rs. 350/-                    |
| Log Book Fees              | Rs. 1,000/-                  |
| Synopsis Fees              | Rs. 1,500/-                  |
| Thesis / Dissertation Fees | Rs. 21,000/-                 |
| Curriculum Fees            | Rs. 2,000/-                  |
| Library Registration Fees  | Rs. 1,000/- only one time    |
| Library Monthly Fees       | Rs. 1,000/- (per month fees) |

NOTE: If schedule workshop is missed by trainee, the candidate will have to pay additional Rs. 3000/- to attend missed workshop subsequently.

## COURSE REQUIREMENTS:

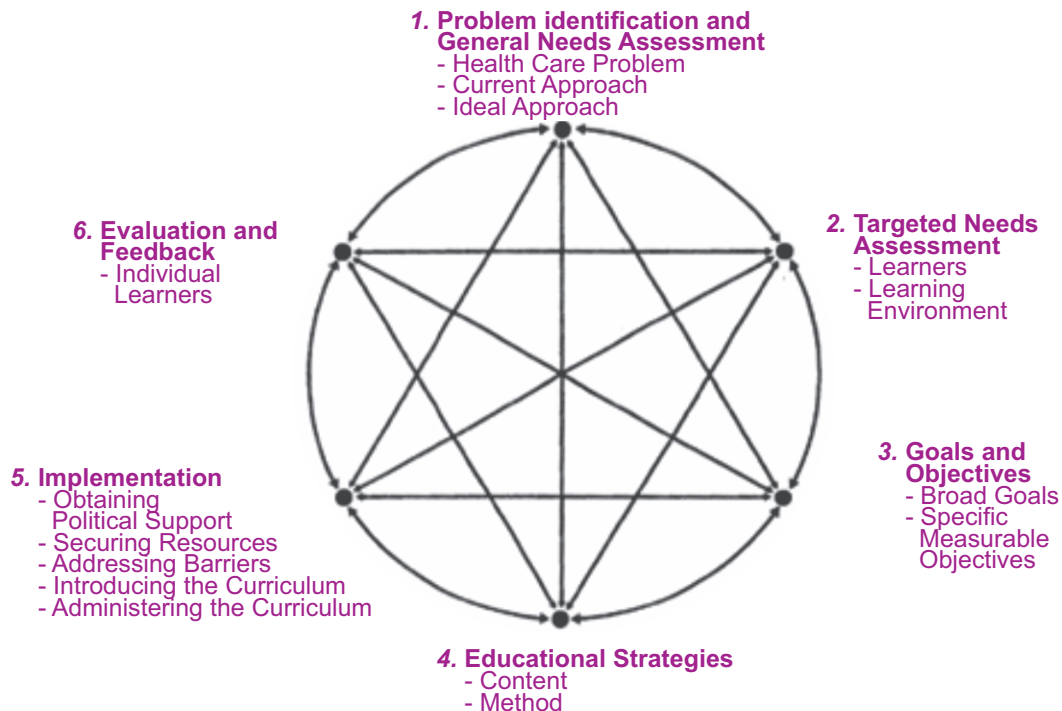


- (a) The stipend will only be offered to MD / MS / FCPS-II & DA / MCPS in (Anaesthesiology) courses on availability of funds released by Govt. of Sindh under the rules and regulations of Postgraduate Education Committee. Trainee if willing to continue training voluntarily without stipend subject to availability of slot/s have to submit an affidavit duly attested by 1st class magistrate for not claiming of stipend at any platform.
- (b) Each training will be full time and residential.
- (c) Postgraduate students will not be allowed to do private practice or join any other institution on the part-time or full-time basis.
- (d) Regularity and Punctuality is essential. Any candidate who remains absent for more than a week will have to explain his absence in written and absent for one month will be given show cause notice and will be called for personal hearing before Postgraduate Committee. Failing to satisfy the Committee will make him/ her liable to be terminated from the course. The absence of even one day emergency or casualty duty is considered to be the act of major misconduct & liable to be terminated from the course.
- (e) Each Degree Course candidate has to maintain the manual log book or e-Log.
- (f) Candidate has to strictly abide by the postgraduate Rules and Regulations of the PGMC PUMHSW SBA enforced from time to time.
- (g) Candidates who have FCPS or equivalent examination will be considered for

| Scenario:  | Exemption Recommended:<br>Additional Requirement:  |
|--|--|
| For qualification of MS in General Surgery and Allied Candidates having FCPS/MRCS        | Maximum Two years of Training<br>Training for Remaining period as per requirement.<br>- Thesis All the speciality related components of the Final Examination. |
| FRCS or Equivalent qualification as recognized by Erstwhile PM&DC in the Same speciality |  |
| For qualification of MD in General Medicine and Allied having                            | Maximum Two years of Training<br>Training for Remaining period as per requirement.<br>- Thesis All the speciality related components of the Final Examination  |
| FCPS/ MRCP or Equivalent qualification as recognized by PM&DC in the same speciality     |  |



- a. The curriculum is an ever changing to identify and characterize as to how it can address the health care problem on current advancement.



- b. Curriculum of each Degree / Diploma course of every discipline is strictly followed. English is the medium of instruction and examinations.
- c. The lectures/courses in accordance to the curriculum of each Degree /Diploma Program, start in the month of January /February and July / August, which are arranged by the concerned departments to acquaint students with identification of medical problems, general and specific need assessment, along with goals and objective to achieve subjected experience and techniques of research in perspective advanced level of instructions in the relevant field.
- d. All Postgraduate candidates / Trainees of Degree courses will be required to complete all mandatory workshops and Midterm Assessment (MTA) as prescribed and conducted by the PGMC, during the course of studies and before appearing in final examination.
- e. Residents must be provided with increasing individual Professional responsibility under appropriate supervision, according to their level of training, ability and experience for the management of patients.
- f. In addition to offering the components noted in the speciality training requirements all accredited programs in postgraduate offer problem solving experiences as mandatory step.
- g. The resident is supposed to identify and characterizes health care problem and to determine the current and ideal approaches to address it, and in this content, resident is supported by university to obtain necessary information with following facilities and availabilities.
- h. This curriculum steps covers and commensurate with following core competencies designed by ACGME & WFME.
- 1) Patients Care
  - 2) Medical knowledge
  - 3) Interpersonal & Communication Skills
  - 4) Professionals
  - 5) .Practice based learning
  - 6) System based practice but our curriculum also incorporates an extra:
  - 7) Research.



There are sufficient resources including teaching faculty, the number and variety of patients, physical and technical resources, as well as the supporting facilities and services necessary to provide the opportunity for all residents in the postgraduate teaching program to achieve the education objectives and receive full training as defined by the speciality training requirements in postgraduate studies recommended by Erstwhile PM&DC, HEC and International Academic Forums.

In those cases where a university has sufficient resources to provide most of the training in postgraduate studies but lacks one or more essential elements, the program may still be accredited provided that formal arrangements have been made to send on rotations to another accredited residency program universities for period of appropriate prescribed training. Learning environments in this university include experiences that facilitate the acquisition of knowledge, skills and attitudes relating to aspects of age, gender, culture and ethnicity appropriate to postgraduate studies.

## TEACHING FACULTY:

There is a sufficient number of qualified faculty to supervise residents at all levels and in all aspects of the speciality. The faculty includes a nucleus of full time Professors, Associate Professors, Assistant Professors, Senior Registrars, Senior Lecturers, Role Model Teachers and mentors.

## NUMBER AND VARIETY OF PATIENTS:

The number and variety of patients available to the program in all teaching facilities are consistently sufficient to meet the educational needs of the residents as well as other students.

### Miscellaneous Mandatory Components:

- ❖ Information resources,
- ❖ Learning environment
- ❖ Computers
- ❖ Audio visual equipment
- ❖ Financial Funding



There are organized programs of rotations and other educational experiences, both mandatory and elective, designed to provide each resident with the opportunity to fulfill the educational requirements and achieve required competence in the speciality.

Following different Educational Methods are practiced to enrich the residents with required knowledge, skills & attitude.

1. Reading (Recommended Text Books)
2. Lectures
3. Clinico-pathological conferences
4. Programmed Learning
5. Discussion
6. Reflection on experience
7. Feedback on performance
8. Small group learning
9. Problem based learning (P.B.L)
10. Team based learning (T.B.L)
11. Learning projects
12. Role models
13. Demonstration
14. Artificial models and simulation
15. Standardized patients
16. Clinical experience / Conferences
17. Audio and Video reviews
18. Journal clubs & Audits
19. Hands on workshops
20. Morbidity & Mortality meetings

The content and organization of each accredited program in postgraduation is consistence with the speciality training requirements as prescribed in the curriculum approved by Erstwhile PM&DC and HEC.





To achieve the Bloom's Taxonomy of learning domains (Cognitive, Affective and Psychomotor) throughout the length of course the performance of the candidate will be recorded on the log book. The log book will reflect the performance of the candidates in the following parameters:

- ❖ Record of competence of technical skills.
- ❖ Record of assignments.
- ❖ Record of affective and interpersonal behaviors.
- ❖ Record of Journal clubs, conferences and lectures attended.

### MANDATORY WORKSHOP

These will be developed by the concerned Departments and will be submitted to Director PGMC at the end of training by the candidate.

Mandatory workshops for Degree :

MS  
MD  
M.Phil  
MPH &  
MSPH Courses

During training candidate have to attend four (04) mandatory workshops in first two years of training viz:

- 1) Orientation of Computer & Internet
- 2) Research methodology / Synopsis / Dissertation / Thesis writing
- 3) Communication skills.
- 4) Basic Life Support.

Note: ACLS for Discipline of Anesthesiology, Cardiology, General Medicine, Gynae & OBS for Degree Programs with additional Fee of Rs. 30,000/=

**These workshops will be organized by **Director Medical Education** in collaboration with **Director Post Graduates Studies PUMHSW Nawabshah, Shaheed Benazir Abad.****

**PG Hostel facilities is available for Female candidates only, Subjected to available vacancy.**



1. Evidence-based reviews of educational and clinical topics    Published original studies
2. Clinical practice guidelines    Published recommendations on expected competencies    Reports by professional organizations or government agencies    Documents submitted to educational clearing houses    Curriculum documents from other institutions.
3. Patient education    materials prepared by foundations or professional organizations.
4. Patient support organizations    Public health statistics    Clinical registry data    Administrative claims data
5. Use of Consultants/Experts    Informal Consultation    Formal Consultation    Meetings of experts
6. Collection of New Information    Surveys of patients, practitioners, or experts    Focus group(s)
7. Nominal group technique    Group judgment methods (Delphi method)    Daily diaries by patients and practitioners.
8. Observation of tasks performed by practitioners    Time and motion studies    Critical incident reviews
9. Study of ideal performance cases or role-model practitioners





- ❖ The Candidates must have completed prescribed training period in the concerned speciality and has been a full time residential student of the University.
- ❖ The students should have attended a minimum of **75%** of lectures, demonstrations and practical work, failing which they will not be allowed to appear in the examination; in the latter case they may be permitted to appear in the next examination provided they make up deficiency.
- ❖ Certificate of attendance from supervisor .
- ❖ Submission of duly signed complete log book.
- ❖ Letter of Approval of thesis / dissertation.
- ❖ Certificates of having attended all the mandatory workshops.
- ❖ Training completion certificate by Director PGMC.





- ❖ Residency programs for MS/MD Degree Programs are structured and designed to inculcate the predefined competencies in residents through very defined, dynamic and congruent curriculum, which is similar to ACGME America. (For Residency and Fellowship Education), Royal Colleges of England and other medical universities of Pakistan and according to category III qualification by PMDC.
- ❖ This structured system will bring recognition and accreditation as having uniformity in the competencies acquired by the residents in their respective programs across the national and international gamut of academics.
- ❖ This competency-based structured resident programs stand with multifaceted assessment techniques for target oriented successful outcome. The multiple works based on formative and summative assessments ensure the trainees for better understanding of their weaknesses and strengths.
- ❖ The candidates have the opportunity to come up to the mark by consulting their mentors and supervisors. While, the strength of resident is seen as a motivational tool.
- ❖ The competency based resident training is controlled and measured through structured program which is divided into 1st, 2nd, 3rd, 4th and 5th calendar.

## 2. NAME AND DURATION OF PROGRAMS

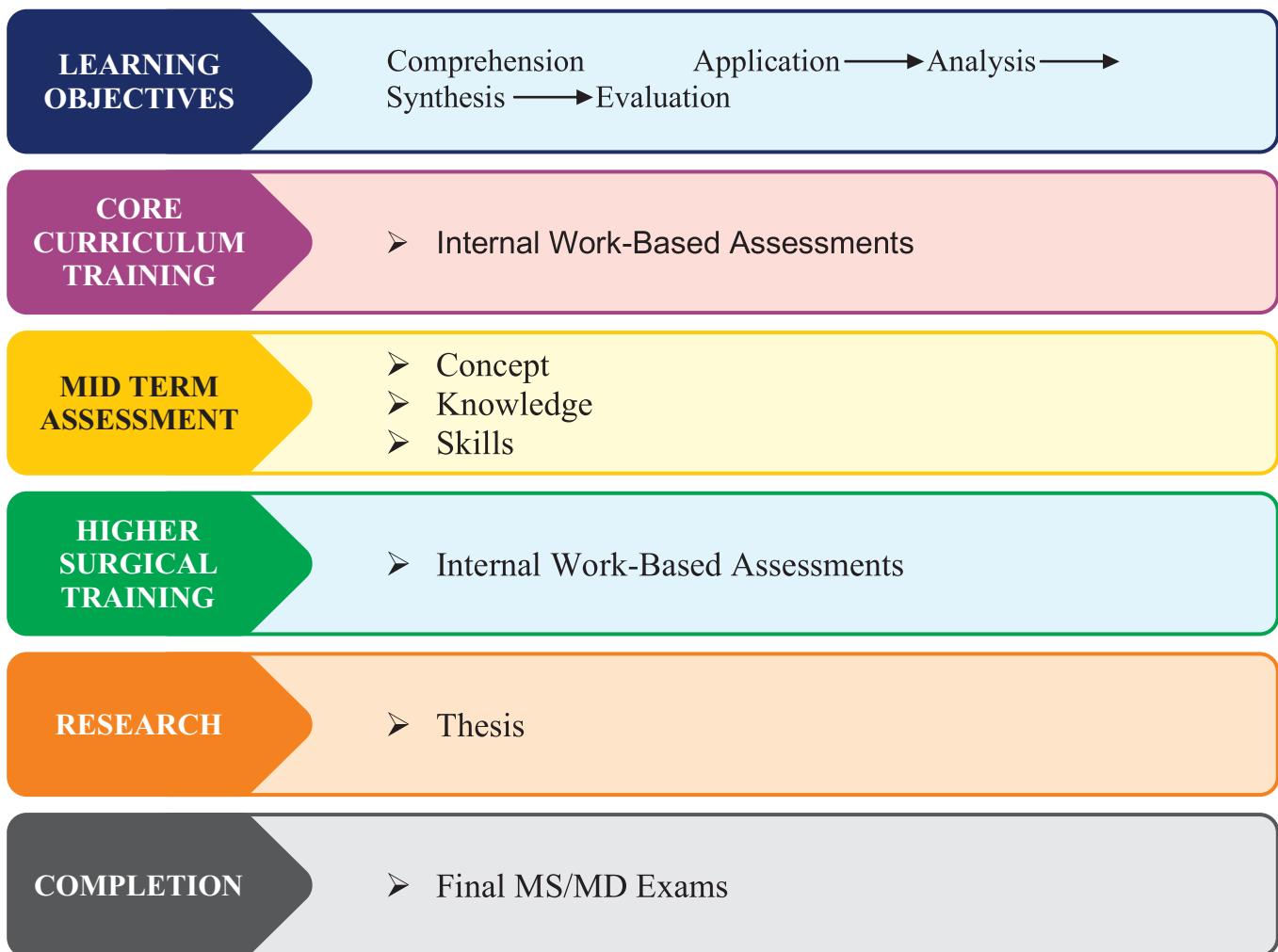


| Title of Program   | Four Year Duration              | Five Year Duration       |
|--|---------------------------------|--------------------------|
| <b>MD<br/>(Doctor Of<br/>Medicine)</b>   | <b>Internal Medicine</b>        | <b>Cardiology</b>        |
|  | <b>Pediatrics</b>               | <b>Dermatology</b>       |
|  | <b>Psychiatry</b>               | <b>Endocrinology</b>     |
|  | <b>Radiology</b>                | <b>Gastroenterology</b>  |
|  | <b>Neurology</b>                |                          |
| <b>MS (Master of<br/>Surgery)</b>  | <b>Anesthesiology</b>           | <b>Neurosurgery</b>      |
|  | <b>General Surgery</b>          | <b>Orthopedics</b>       |
|  | <b>Gynae&amp; Obstetrics</b>    | <b>Pediatric Surgery</b> |
|  | <b>Ophthalmology</b>            | <b>Urology</b>           |
|  | <b>Otorhinolaryngology(ENT)</b> |                          |
| Any other Speciality in the MD,MS as approved by the Borad of Studies, Academic Council and Syndicate of the University. |                                 |                          |

### 3. OBJECTIVES OF PROGRAMS(MS/MD DEGREE PROGRAMS)



- a) To provide training in cognitive, psychomotor and affective domains.
- b) To train in chosen clinical field through a competency based training system, which comprises the following six basic competencies as defined by ACGME:
  - 1) Patient care
  - 2) Medical knowledge
  - 3) Professionalism
  - 4) System-based practice
  - 5) Practice based learning &
  - 6) Improvement
- c) To develop skills in conducting research and its application to clinical environment.
- d) To enable trainees to use modern techniques and technologies effectively.





## 4. PROGRAM FORMAT



- i. The MD/MS Degree programs shall consist of 4 and 5 years duration.
- ii. During the course of study, each candidate shall be required to undertake an intermediate examination Mid Term Assessment Examination (MTAE) and final examination. The intermediate examination shall be held after 02 Years.
- iii. The final examination shall be held only after completion of the prescribed training period of 4/5 years, as the case may be.
- iv. MS/MD degrees programs shall be research and clinical oriented degrees and a candidate shall be required to write a research thesis apart from undergoing a clinical training program.
- v. The candidate after grant of admission in to MD/MS Degree programs or other degree courses will be trained according to the Program Format as listed
- vi. The candidate will spend the first (one) year of induction period in the chosen speciality. During this period the candidate shall learn orientation within the discipline and introduction to fundamental concepts including principles of subject:
- vii. The candidate will attend four mandatory workshops as under:
  - Orientation of Computer & Internet
  - Research methodology / Synopsis / Dissertation / Thesis writing
  - Communication skills.
  - Basic Life Support
    - o Note: ACLS for Discipline of Anesthesiology, Cardiology, General Medicine, Gynae & OBS for Degree Programs with additional Fee of Rs. 30,000/=
- viii. The workshops should be completed preferably within one year but no later than the date of submission of application to appear in the Intermediate Examination i.e:- MTAE
- ix. The candidate will submit synopsis for approval within the first 6 months period according to the prescribed framework under the prevailing institutional regulatory requirements for submission of synopsis
- x. In case of failure to submit the synopsis for approval within the stipulated time after induction in the program, an additional grace period not more than 15 days may be granted by the Vice Chancellor.
- xi. Any difficulty faced by the candidate to submit the synopsis should be brought to the notice of the Director Medical Education for remediation before completion of 05 months from the time of induction. The Director Medical Education would issue 02 fortnightly reminders to the appropriate person / forum and in case of failure, shall bring it to the notice of Vice Chancellor and submit its report to the Academic Council.
- xii. In case of non submission of synopsis within this period, the candidate will not be allowed to continue in the training program. The stipend/scholarship if any will be stopped and the post shall fall vacant.
- xiii. The candidate will submit certificate of successful completion of mandatory workshops and certificate of submission of synopsis to the Director PGMC according to the schedule.
- xiv. After each rotation and at 3 monthly intervals during training the candidate would apply to his supervisor for completion of supervisor's evaluation proforma as given in Appendix and send a copy of this application to the Director PGMC. The supervisor would submit this proforma to the Registrar's office within fifteen days who would recruit him for the next phase of rotation program/training while completing the codal formalities.
- xv. In case of non-submission of proforma the candidate would prompt his supervisor to submit the evaluation proforma and also intimate the Director PGMC about this fact.

## 4. PROGRAM FORMAT



- xvi. In case of non submission of supervisor's evaluation proforma, the Director PGMC would issue two fortnightly reminders and if the proforma is still not submitted, it will be brought to the next Academic Council.
- xvii. All the candidates in MD Degree program as given in will be trained in General Medicine for 2 years along with atleast two rotations in subspecialties of Medicine except those who will be in MD Degree programs in the allied subspecialties like Cardiology, Neurology, Psychiatry, Nephrology, Chest Medicine and others.
- xviii. The candidate in MD programs of Medicine and allied subspecialties like Cardiology, Pediatric Medicine, Neurology, Psychiatry, Nephrology, Chest Medicine (Pulmonology) etc will be trained as per their respective Curricula approved by their Board of Studies(BOS) and Advanced Studies and Research Board(AS&RB).
- xix. All the candidates in MS Degree programs as given will be trained in general surgery for 2 years along with atleast two rotations in subspecialties of Surgery except those who will be in MS Degree programs in the speciality of Ophthalmology, Otorhinolaryngology Obstetrics & Gynaecology, Anesthesiology, Neurosurgery, Pediatric Surgery, Orthopedic Surgery, Radiology etc.
- xx. The candidates in MS Degree programs of Surgery and allied subspecialties like Ophthalmology, Otorhinolaryngology Obstetrics & Gynaecology, Anesthesiology, Neurosurgery, Pediatric Surgery, Orthopedic Surgery, Radiology etc will be trained as per their respective Curricula approved by their Board of Studies and Advanced Studies and Research Board.
- xxi. The rotational placements for MD/MS Degree programs and other Postgraduate Degree Course training programs will be according to the schedule of rotations for each program as prescribed in their respective Curricula approved by their Board of Studies and Studies and Research Board.
- xxii. There will be minimum of two rotational placements in the relevant fields as specified in their respective approved Curricula through their respective Board of Studies and Advanced Studies and Research Board.
- xxiii. For all four (4) year programs of MD/MS the candidate will rotate for at least in three sub-specialities for (2-3) months as per their respective curricula approved by respective Board of Studies and Advanced Studies and Research Board.
- xxiv. All rotational placements must be completed at least 06 months prior to completion of training.
- xxv. Intermediate Examination i.e MTAE (Mid Term Assessment Examination) will be held on completion of two years of training of MS/MD Degree program in all clinical subjects.
- xxvi. It is the responsibility of the candidate through his / her supervisor to get his synopsis approved from AS&RB within 02 years from the date of admission in to training program. In case of failure in getting the synopsis approved within this time period an additional grace period of 30 days may be granted at the discretion of the VC. If the candidate still fails to get his synopsis approved he/she would stand ineligible to appear in the Intermediate Examination and will be excluded from the training in the chosen program. His stipend/scholarship if any will be stopped and the post shall fall vacant. Any difficulty faced by the candidate for completed submission of synopsis must be brought to the notice of the Director PGMC for remediation before completion of 18 months from the time of induction. The Director PGMC would issue 02 fortnightly reminders to the appropriate person / forum and in case of failure, shall submit its report to the Academic Council.
- xxvii. After the Intermediate Examination, the candidates of five (5) years programs will initiate research project at the beginning of 3rd year of training.
- xxviii. The candidates of all other (04 years) programs will initiate research project immediately after approval of synopsis.
- xxix. That the Board of Advanced Studies and Research allows only Six attempts at any component of MS/MD Degree program examinations, which is in line to GMC, (General Medical Council) guide lines.

# EXAMPLE OF 04 YEARS STRUCTURE OF TRAINING TRTRAINING

## XI. STRUCTURED TRAINING PROGRAM FOR MD/MS PUMHS 04 / 05 YEARS PROGRAM.

| Month | Topic   | Conducted by                   | Month    | Topic  | Conducted by               | Month | Topic   | Conducted by |
|-------|---|--------------------------------|----------|--|----------------------------|-------|---|--------------|
| R1 1  | Selection of Topic for Synopsis   | Supervisor                     | 21 to 22 | month each in any of the following OR<br>• Two rotations of 1½ month each in any of the following.<br>• Neurosurgery<br>• Urology<br>• Plastic Surgery | Supervisor                 | 35    | RESEARCH WORK AND THESIS WRITING  | Supervisor   |
| 2     | Workshops   |                                |          |  |                            |       |   |              |
| 3     | Orientation of Computer & Internet  | Director Research              | 24       |  |                            |       |   |              |
| 4     | Research Methodology & Medical Writing  |                                |          |  |                            |       |   |              |
| 5     |   |                                |          |  |                            |       |   |              |
| 6     | Submission of Synopsis  | Chairman of Medicine / Surgery | R3 25    | Mid Term Assessment  | Controller of Examinations | R4 37 | Advanced Professional Education in Speciality of Admission (04 to 48 months)            | Supervisor   |
| 7     |   |                                |          |  |                            |       |   |              |
| 8     |   |                                |          |  |                            |       |   |              |
| 9     | Principles of Medicine (MD)   | Supervisor                     | 26       | Workshops BLS, ACLS & ATLS   | Director Research          | 38    |   |              |
| 10    | Principle of Surgery (MS)   |                                | 27       |  |                            | 39    |   |              |
| 11    | ADVANCED PROFESSIONAL EDUCATION IN SPECIALITY OF ADMISSION (04 to 48 Months)  |                                | 28       |  |                            | 40    |   |              |
| 12    |   |                                | 29       | Advanced Professional Education in Speciality of Admission (04 to 48month)   | Supervisor                 |       |   |              |
|       |   |                                | 30       |  |                            | 41    |   |              |
| R2 13 | (iii) Workshop on Communication skills  | Director Research              | 31       |  |                            | 42    | THESIS SUBMISSION   |              |
| 14    |   |                                |          |  |                            | 43    |   |              |
| 15    |   |                                |          |  |                            | 44    | Advanced Professional Education In Speciality of Admission (04 to 48month)              | Supervisor   |
| 16    |   |                                |          |  |                            | 45    |   |              |
| 17    |   |                                |          |  |                            | 46    |   |              |
| 18    | • 18 months of Training in Surgical Unit<br>• One compulsory rotation in orthopaedic and trauma for Three months.<br>• Three rotations of one | Supervisor                     | 34       |  |                            | 47    | THESIS REVIEW   |              |
| 19    |   |                                |          |  |                            | 48    | FINAL EVALUATION  |              |
| 20    |   |                                |          |  |                            |       | LOG BOOK COMPLETION AND VERIFICATION BY SUPERVISOR ON 01st WEEK OF EVERY CALENDAR MONTH |              |

1. R1 = 1st Year, R2. = 02nd year, R3 = 03rd year, R4 = 04th year / final year.



STRUCTURE OF TRAINING

| Month                         | Topic  | Conducted by   | Month                             | Topic                            | Conducted by   | Month                     | Topic   | Conducted by                           |
|-------------------------------|--|--|-----------------------------------|----------------------------------|--|---------------------------|---|--|
| R1<br>1                       | Selection of topic for synopsis  | Supervisor   | 22                                | Neurology ward, OPD & Emergency  | Supervisor   | 55<br>56                  | Submission of Thesis                                  | Controller of examination PG,PGMC+ DME |
| 2                             | Workshops  | Director Research / Director PGMC / DME                              | 23                                | Nephrology ward, OPD & Emergency |  | 57                        | -Learning Advance                                     | Supervisor                             |
| 3                             | i) a)BLS   |  |                                   |                                  |  | 58                        | Teaching skills                                       |  |
|                               |  |  |                                   |                                  |  | 59                        | -Participation in research work / Academic activities |  |
|                               |  |  |                                   |                                  |  | 60                        | - Preparation for final examination                   |  |
|                               |  |  |                                   |                                  |  | 60                        | -Thesis review<br>-Final evaluation                   |  |
| 4                             | ii)Orientation of computer & internet  | 24   | Pulmonology ward, OPD & Emergency | Supervisor                       | LOG Book Completion and verification by supervisor on 1 <sup>st</sup> of every week calendar month |                           |   |  |
| 5                             |  |  |                                   |                                  |  |                           |   |  |
| 6                             | Submission of synopsis   | Through supervisor: Chairman of Cardiology/ Dean Faculty of Medicine | R3<br>25                          |                                  |  | Mid Term Assessment + CCU | Controller of examination (PG) + Supervisor           |  |
| 7<br>8<br>9<br>10<br>11<br>12 | Principles of Cardiovascular Medicine. ADVANCE PROFESSIONAL EDUCATION IN SPECIAL ADMISSION Attending OPD & Emergency Dept. iii) Research methodology v)Communication skills. | Supervisor   | 26                                |                                  |  | CCU                       | Supervisor  |  |
|                               |  |  | 27                                |                                  |  |                           |   |  |
|                               |  |  | 28                                |                                  |  |                           |   |  |
|                               |  |  | 29                                |                                  |  | ECHO                      |   |  |
|                               |  |  | 30                                |                                  |  |                           |   |  |
|                               |  |  | 31                                |                                  |  |                           |   |  |
|                               |  |  | 32                                |                                  |  |                           |   |  |
|                               |  |  | 33                                |                                  |  | ETT & Nuclear cardiology  |   |  |
|                               |  |  | 34                                |                                  |  |                           |   |  |
|                               |  |  | 35                                |                                  |  | Cardiac CT & MRI          |   |  |
| 36                            |  |  |                                   |                                  |  |                           |   |  |
| 37                            | R4 Cardiac Cath Lab  |  |                                   |                                  |  |                           |   |  |
| 38                            |  |  |                                   |                                  |  |                           |   |  |
| 39                            |  |  |                                   |                                  |  |                           |   |  |
| 40                            |  |  |                                   |                                  |  |                           |   |  |
| R2<br>13                      |  |  | 41                                |                                  |  | Cardiac electrophysiology |   |  |
| 14                            |  |  | 42                                |                                  |  |                           |   |  |
| 15                            |  |  | 43                                | Pediatric Cardiology             |  |                           |   |  |
| 16                            |  |  | 44                                |                                  |  |                           |   |  |
| 17                            |  |  | 45                                |                                  |  |                           |   |  |
| 18                            |  |  | 46                                | Cardiac Surgery                  |  |                           |   |  |
| 19                            | Rotations General Medicine Attending   | Supervisor or  | 47                                |                                  |  |                           |   |  |
| 20                            |  |  | 48                                |                                  |  |                           |   |  |
|                               |  |  | R5                                | 49                               | Completed of Research work.  |                           |   |  |
|                               |  |  |                                   | 50                               | Advance Learning in  |                           |   |  |
|                               |  |  | 51                                |                                  |  |                           |   |  |
|                               |  |  | 52                                |                                  |  |                           |   |  |

THIS IS : RESEARCH WORK , DATA COLLECTION, ANALYSIS, THESIS WRITING, SUBMISSION & APPROVAL

## 5. CREDIT HOURS



- MS/MD degree program that spans 4 years including both residency training and clinical rotations in related specialties encompasses around 69-70 credit hours each year, with a total of 276-280 credit hours for the entire program.
- MS/MD degree program that spans 5 years including both residency training and clinical rotations in related specialties encompasses around 71-75 credit hours each year, with a total of 355-375 credit hours for the entire program.
- Credit hours are calculated using the formula:  $\text{Credit Hours} = \text{Number of Contact Hours per Week} / 15$ .
- Contact Hours refer to the number of hours a trainee spends in direct contact with the instructor for lectures, seminars, case studies, and clinical rotations.
- The credit hours awarded are based on the student's attendance and learning outcomes defined in the structured training calendar/curriculum.
- The Total academic weeks for all 4 years=208.
- Government Holidays and leaves in four years = 12 weeks. (208 - 12=196)
- Personal/casual Leaves by a trainee during the course= 8wk (196 - 8=188wks)
- Leave for MTA=2 wks (188-2 wks=186).
- Leave for research work= 4weeks\* (186- 4wks=182wks)
- Leave for final examination preparation=4 wk (182- 4 wks=178wks)
- After subtracting all these leaves from the total academic weeks, the remaining weeks are =178
- Contact Hours/day=4 hours
- Contact hours on Friday =3 hours 06 days/wk=23 contact hours
- Total contact hours. =23><178 =4,094
- Total credit hours =4,094/15- [ ] = 274
- After likewise calculation of 5 years programs the total academic weeks are = 260 weeks. After deducting personal, MTAE and FINAL EXAM leaves the final academic duration remains=229 weeks
- Hence total contact hours 23hr/week=23×229=5267, therefore as per formula 5267/15=351 credit Hours for 5 years programs.



In all MS/MD degree courses the assessment for three domains of learning cognitive (thinking/head), affective (feelings/emotions) & psychomotor (physical) is achieved through the:

- a) **Formative Assessments:** used to provide feedback, (Mini-CEX, DOPS,, CBD); and
- b) **Summative assessments:** demonstrates competence (during induction, log books, midterm exams, research Written Work (WW), Performance Tasks (PT), Quarterly Assessment (QA), and final exam.)

In this highly advanced medical post-graduation, the educational basis of workplace-based assessments of trainees in degree courses is essential for producing safe and competent medical professionals. The traditional way of competency assessment does not provide an opportunity for trainees to have direct observation of their performance by different evaluators and receive feedback.

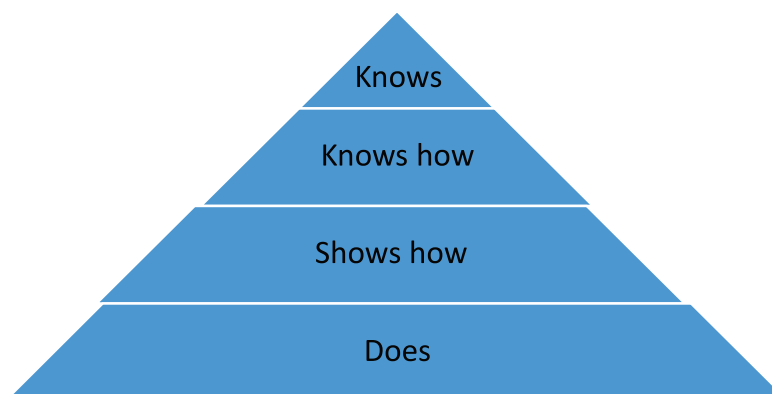
Formative assessment is taken on workplace-based assessment, such as case-based discussion, directly observed practical skills (DOPS), Mini-Clinical Evaluation Exercise (Mini-CEX), and multi-source feedback (MSF), is increasingly important to evaluate the progress and achievement of trainees and can identify areas that require further development. These assessments are an integral part of curriculum design and educational planning, in teaching, learning, assessment, and feedback, and encourage a holistic approach, reflective practice, and life-long learning.





## INFORMATION : STRENGTHENING THE POSTGRADUATE PROGRAMS

### FRAMEWORK FOR ASSESSING THE CLINICAL COMPETENCE



#### **The WPBAS-Comprise:**

##### **a) Case-Based Discussion (CBD),**

Traditionally, cases have been used during training by consultants for discussions after the rounds and outpatient consultations. CBD builds on these traditional methods by allowing for a structured discussion in a separate time where one-to-one discussion with the trainee can take place.

The CBD is a structured discussion between the trainee and educational supervisor about how a clinical case was managed by the trainee; talking through what occurred and the reasons for actions. Normally before the discussion, the trainee selects 2 (or more) cases and presents copies of relevant clinical entries to the supervisor who selects one of them. The discussion should be framed around the actual case and should not explore hypothetical events.

The domains that can be assessed using CBD are clinical reasoning, clinical assessment, management planning including investigation, follow-up, and referral as well as communication, professionalism, etc. Most assessments take no longer than 15-20 minutes. Feedback would normally take about 5 minutes. The trainee and the trainer should ensure that throughout the placement, a balance of cases is represented across varying contexts.

The following are considered the main advantages of CBD:

CBD is a structured, in-depth discussion between the trainee and educational supervisor about decision-making and the application of medical knowledge in cases for which the trainee has been directly responsible, so it can be used to explore professional judgment. By using clinical cases that offer a challenge to the trainee, rather than routine cases, the trainee can explain the complexities and the reasoning behind choices made.

CBD can test higher-order thinking and synthesis as it allows assessors to explore a deeper understanding of how trainees prioritize and apply knowledge.

It enables the discussion of the ethical and legal framework of practice.

As actual patient records are the basis for dialogue, the assessor can also evaluate the quality of record keeping and the presentation of cases.



## b) **Directly observed practical skills (DOPS),**

DOPS is designed to provide feedback on procedural skills essential to the provision of good clinical care. Trainees are asked to undertake practical procedures with a different observer for each encounter. Each DOPS should represent a different procedure and will normally be completed opportunistically during every day work. The trainee chooses the timing, procedure, and the observer, which may be experienced Registrars, or Consultants.

The assessment involves an assessor observing the trainee perform a practical procedure within the workplace, and a structured checklist is designed to give guidance to the assessors. Most procedures take no longer than 15-20 minutes. Feedback would normally take about 5 minutes. There are certain mandatory procedures to be covered for trainees at different stages of medical training, for example for newly qualified trainees (first-year residents): venipuncture, arterial blood sampling, urinary catheterization, etc.

### **Behaviors observed in a DOPS include:**

- i. Demonstrating understanding of indications, relevant anatomy, and technique
- ii. Obtaining informed consent
- iii. Demonstrating appropriate preparation pre-procedure
- iv. Appropriate analgesia or safe sedation
- v. Technical ability
- vi. The aseptic technique (if appropriate)
- vii. Seeking help where appropriate
- viii. Post-procedure management
- ix. Communication skills
- x. Consideration of patient/professionalism
- xi. Overall ability to perform a procedure

The following are the main advantages of DOPS as a valid assessment tool:

- The trainee is assessed during every day work performing procedures on real patients.
- Not only the technical ability observed, but also interaction with patients, colleagues, and professional behaviors can be assessed.
- A range of skills, from simple to very complex procedures can be assessed.
- Many trainees will “need further development”, so after receiving feedback, the strengths and weaknesses can be highlighted and the trainee can work on them and be assessed at a later date.
- There is a need to check that doctors’ procedural skills have been retained and are used appropriately within the context of everyday practice, DOPS is a suitable assessment tool for this purpose.



## c) Mini-Clinical Evaluation Exercise (mini-CEX)

This tool assesses clinical skills, attitudes, and behaviors essential to the provision of high-quality care

Mini-CEX is a 15-minute snapshot of doctor-patient interaction, designed to assess the clinical skills, attitudes, and behaviors essential to the provision of high-quality care. The assessment involves observing the trainee interact with a patient in a clinical encounter. Each of these encounters should represent a different clinical problem and trainees should sample from a wide range of problem groups with each focusing on specific aspects of the clinical encounter. It permits evaluation based on a much broader set of clinical settings and patient problems and is administered on-site. Trainees are encouraged to choose a different assessor for each assessment. The estimated time required is 20 minutes (15 minutes for assessment, 5 minutes for feedback).





## THE AREAS OF COMPETENCE COVERED INCLUDE:



- i. History taking
- ii. Physical examination
- iii. Professionalism
- iv. Clinical judgment
- v. Communication skills
- vi. Organization
- vii. Efficiency
- viii. Overall clinical care

### **The main strengths of mini-CEX as an assessment tool are as follows:**

It can be used in different clinical settings: on the ward, on ward rounds, during on-call shifts, or in outpatient clinics.

Skills such as history taking, communication skills, physical examination and the management of patient problems can be difficult to assess reliably, and in the past, such assessment has been sub-optimal. Mini-CEX provides a practical solution within the workplace.

Because the interaction is relatively short and each trainee can be evaluated on several occasions, in comparison to the traditional “long case examination”, mini-CEX assesses trainees in a much broader range of clinical situations, has better reproducibility, and offers trainees greater opportunity for instruction and feedback by “more than one” faculty member and with “more than one” patient.

Through being observed undertaking many cases, over some time, with several different assessors, these individual brief encounters add up to provide a reliable measure of a trainee's performance.

The mini-CEX format may produce less anxiety than the traditional formats because the assessment is less formal and less dependent on a single, high-stakes encounter with one faculty member and one patient.

- d) TOACS:** The modified OSCE, stands for Task Oriented Assessment of Clinical Skills covers application of knowledge, clinical reasoning skills, communication skills, procedural skills and attitudes.

- e) LOG BOOK:** It is an integral part of curriculum, records practical works verified by supervisor.

It is a structured book in which certain types of educational activities and patient related information is recorded, usually by hand.

Logbooks provide a clear setting of learning objectives and give trainees and clinical teachers a quick overview of the requirements of training to see which learning objectives have not yet been accomplished and to set a learning plan.

The analysis of logbooks can reveal weak points of training and can evaluate whether trainees have fulfilled the minimum requirements of training.

Logbooks facilitate communication between the trainee and clinical teacher. Logbooks help to structure and standardize learning in clinical.

## THE AREAS OF COMPETENCE COVERED INCLUDE:



- f) **Traditional assessment tools:** Multiple-choice tests, true/false tests, short answers, and essays.
- g) **Multi Source Feedback (MSF):** Multi-Source Feedback is used to gain feedback on a-trainee's performance in their role and to assess the level of their skills, including behaviors, team working and communication. Feedback on the performance. As, workplace-based assessments: being fair and valid measures of competency ensures the of safe and competent medical professionals who can provide quality care to patients.





## 7. ADMISSION CRITERIA



- a. Applications for admission in various Degree courses of clinical & basic subjects training Programs of PUMHSW University will be invited at the most twice a year, through advertisement in print and electronic media mentioning closing date of applications and date of Entry Examination along with admission criteria on an application format.
- b. **Eligibility:** The applicant on the last date of submission of applications for admission must possess the:
  - i) Basic Medical Qualification of MBBS or an equivalent medical qualification recognized by Pakistan Medical & Dental Council.
  - ii) Certificate of one year's House Job experience in institutions recognized by Pakistan Medical & Dental Council is essential at the time of interview. The applicant is required to submit this Certificate from the concerned Medical Superintendent that the House Job shall be completed before the interview.
  - iii) Valid certificate of permanent or provisional registration with Pakistan Medical & Dental Council.
  - iv) Foreign Graduate will have to produce Equivalent Certificate of their Degree from PMDC.





## 8. ADMISSION PROCEDURE



- i. The admission procedure is based on the type of program being offered, the availability of seats, and the level of competition among the applicants. The admission process in this University shall be in accordance with the policies of the Government.
- ii. University shall regulate the admission of private sector institutions in accordance with the regulations of PMDC, if any.
- iii. The intake into any program shall be consistent with the regulations of PMDC and policies of the Government as the case may be.
- iv. All seats will be filled by open merit. However, graduates of PUMHSW will be given 10% weightage while assigning merit
- v. The candidates selected as per admission criteria, will be notified and offered admission in to either MD , MS or M.Phil & diploma training programs.
- vi. The slots available for each program will be decided by the university.
- vii. The selection process of the candidates through entry examination, includes evaluating the academic and professional achievements, research potential and overall suitability for the program through a written Test/Examination (Part-I), Interview and Evaluation of Psychomotor skills & attitude of Candidate.
- viii. The candidate will be allocated a speciality of training within the MD or MS programs according to the merit and available slots. The training slots in any speciality will be dependent upon the available human resource, infrastructure, curriculum, track record of the program and other parameters as decided by the university. The ultimate decision for allocation of slots / continuation in MD/MS program in a particular speciality will depend on financial feasibility to be provided by the Treasurer on yearly basis.
- ix. The failure of a program as result of poor track record will be referred to the appropriate forum for remediation / discontinuation of the program.
- x. The acceptance of offer of admission by the candidate is to be submitted to the Director PGMC within 07 days after which it will automatically stand invalid.
- xi. On receipt of acceptance from the PGMC, it shall be transmitted to the Human Resource Department (HRD). The candidate will be responsible to provide all necessary documents to the HRD. After codal formalities, the Director PGMC & Registrar of the University will allocate a registration enrollment number to each candidate within 15 days. Failure on the part of candidate to provide all documents within stipulated time will disqualify the candidate and the seat will be declared vacant.
- xii. After registration, the candidate will submit certificate of acceptance from the supervisor of the concerned department as allocated on merit and as directed by the Registrar's / Director PGMC Office. Failure to do so within stipulated time will disqualify the candidate and the seat will be declared vacant.
- xiii. The candidate shall have to get the joining report proforma signed by the Supervisor and failure to do so within 07 days will result in declaration of seat being vacant. This may be filled in by the next available candidate on merit.
- xiv. In case of any grievances, appeal can be filed within 15 days before the Vice Chancellor whose decision shall be final.
- xv. The Director PGMC will submit the record of enrolled candidates with enrollment number in various MS/MD programs to Registrar for registration.



## 9. ENTRY (MS / MD- PART –I ) EXAMINATION

- i) The Entry Examination for admission to MD/MS programs will be a competitive examination.
- ii) Entry Examination will be held for clinical Sciences twice a year only and Once a year for basic sciences, on the dates to be announced by the controller of examinations according to the decision of Deans Committee.
- iii) English shall be the medium of examination & once a year for basic sciences.
- iv) Any change in the dates and format of examination will be notified by the university before the examination
- v) A competent authority appointed by the university has the power to debar any candidate from any examination if it is satisfied that such a candidate is not a fit person to take the college examination because of using unfair means/misconduct or other disciplinary reasons.
- vi) PART ONE (MS/MD Entry Examination have two components).

Written paper and Interview

The written examination stands on two papers.

|                 |  |                 |
|-----------------|--|-----------------|
| <b>Paper-I</b>  | <b>MCQs (single best) Basic Science (applied)</b>  | <b>100 Mark</b> |
| <b>Paper-II</b> | <b>MCQs (single best) General Surgery/ General Medicine &amp; All Disciplines of Surgery/ Medicine Allied Sciences</b> | <b>100 Mark</b> |

- vii) In Paper-I the MCQ's will be included from applied basic subjects (Anatomy, Physiology, Biochemistry, Pathology, Pharmacology) Behavioral Sciences and Biostatistics & Research Methodology and general Surgery(Basic Principles & Specific).
- viii) In Paper-II the MCQ's will be included from the basic subjects and principles of General Surgery/Medicine and surgical medical allied specialties.
- ix) Passing Criteria of (MS/MD Degree Programs)  
PUMHSW SBA is following scientific system of Analyzing the MCQs. The response of the candidates is statistically analyzed using chronbach's formula. The coefficient alpha is calculated. items having poor reliability, or difficulty index less than or equal to zero and negative discriminatory index, are separated. Standard error of measurement is calculated and result is finalized. For Example:
  - if Q1 is marked correct by all students, it will be excluded from paper
  - if Q2 is marked wrong by all students, it will be excluded from paper
  - Rest of marks are divided on questions left.
 So, if you have scored and attempted difficult questions correct. you will have more chances of clearing exam.
- x) The proportional weightage of Basic & Clinical Sciences questions for each program is defined in curriculum of required programs
- xi) The question papers will be in duplicate and their key i.e correct response will be signed by the final paper setter or by the computer based system for the Examination Department.
- xii) The Examination Department will receive sealed envelopes with signatures of the paper setter on the seam overlap of the envelop and then covered with a suitable tape. One of the envelopes will be kept under lock and key in the examination department whereas the second envelop will be submitted to Controller of Examinations except for computer based paper generation.
- xiii) Each correct answer will carry 01 marks.
- xiv) The candidate must secure 60 marks in each paper to pass Part-I (MS/MD) examination.

## 10. INTERVIEW



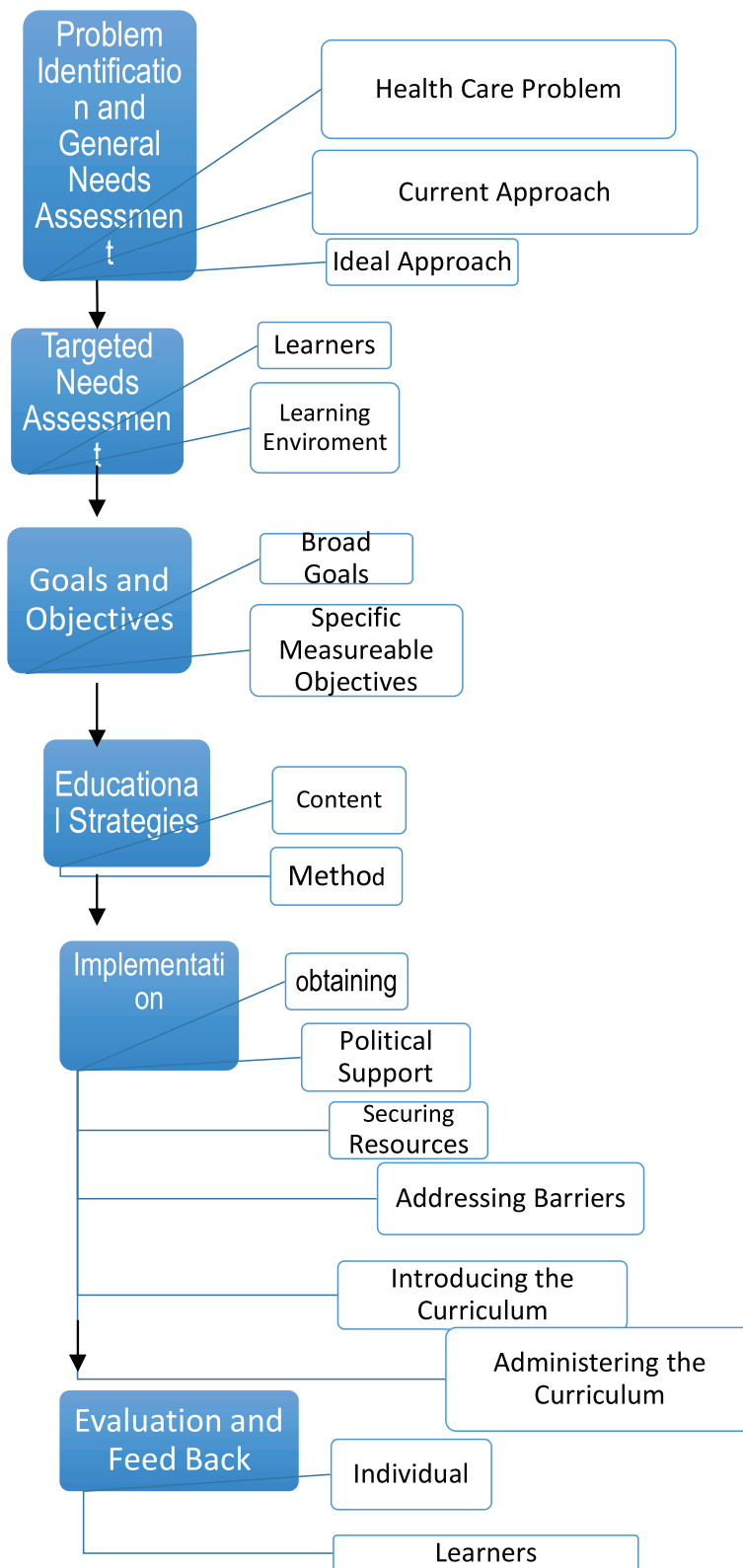
- i) Only those applicants, having scoring 60 % marks in written papers, will be called for interview.
- ii) All applicants shall be required to present all their original academic credentials at the time of interview including certificate of completion of House Job by the Medical Superintendent and good conduct from the Head of Department otherwise they shall not be eligible for appearance in the interview.
- iii) The interview will be conducted by a Committee comprising
  - a) Concern Incharge of Unit
  - b) Chairman of Program/Discipline
  - c) Dean
  - d) Director PGMC
- iv) That the interviewing committee will recommend the names of successful candidates of different programs to the Vice Chancellor for approval.

## 11. ESSENCE OF TEACHING AND TRAINING.

As the field of medicine is constantly evolving and expanding, so, the requirements for training are regularly updated and reviewed to keep pace with these changes by medical education department of PUMHS, and to meet the advanced standards the Regulations governing medical training are in a state of constant revision in order to ensure that they remain applicable, relevant, and up-to-date. In this sense, our medical education system aims to provide students with the most comprehensive and relevant knowledge and skills necessary to excel in their respective areas of practice. As a result, the training requirements for aspiring medical professionals are equipped to provide the highest levels of patient care and safety to their patients. PUMHS is committed to keep the residents updated on all the latest developments in the field of medicine

A typical structured training program encompasses a preparation period with defined entry requirements, predetermined objectives based on a curriculum defined by an authoritative body, with assessments and feedback to the trainee and an exit from training defined by a certificate of completion of training. There Degree Programs All STPs are inspired by a one or another learning philosophy, that range from the traditional model to behavioral and modern approaches based on the cognitive approach.







### 6. Method of Instruction /Course Conduction

As a policy, active participation of students at all levels will be encouraged. Following teaching modalities will be employed.

- i. Lectures
- ii. Seminar presentation and Journal Club Presentations
- iii. Group Discussions
- iv. Grand Rounds
- v. Clinical-Pathological Conferences
- vi. SEQ as assignments on the content areas
- vii. Skill teaching in ICU, Operation Theatres, emergency and ward settings
- viii. Attend genetic clinics and rounds for at least one month
- ix. Attend sessions of genetic counseling
- x. Self-study, assignments and use of internet
- xi. Bedside teaching rounds in ward
- xii. OPD & Follow up clinics
- xiii. Long and short case presentations
- xiv. Clinical case Conference
- xv. Monthly Student Meetings
- xvi. Journal Club Meeting
- xvii. Core Curriculum Meeting
- xviii. Skill Development
- xix. Annual Grand Meeting

## SPECIFIC GUIDELINES FOR DEGREE COURSE RESEARCH

### 12. RESEARCH WORK (Synopsis and Research Protocols)

Every Postgraduate candidate of MS/MD courses shall have to submit the Research Protocol Synopsis within six months of admission. The synopsis shall not include research work for which a degree has already been conferred in this or any other University or DAI's (Degree Awarded Institutions). The synopsis/Research Protocol shall be approved by the advanced Studies & research Board.

### GUIDE LINES FOR SYNOPSIS WRITING

Synopsis is a short summarized document that focuses a briefed information of the research with conducting material & methods for postgraduate residents to have scientific lan of work as to deliver and conclusion.

#### Component of a Synopsis

The following components should be provided in a synopsis of postgraduate research projects.



### 1) **Title Page or Page 1**

There should be the following information on the first page of synopsis.

- Title
- Name of the Student
- Name of Supervisor
- Place of Work

A title page of the synopsis should include title of the research project, name of the student (with qualification), name of the supervisor(s), place of work and date (month and year) of submission.

### 2) **Topic**

The topic for research should be selected carefully. It should be specific and worded to show the nature of work involved as far as possible.

### 3) **Introduction**

It should provide a brief description to introduce the area of the proposed research work.

- Why your project is important
- Where it is used Applications
- What will you talk about?
- Problems and shortcoming of their work
- How your work is different and better than others?

#### **Objectives**

- Board objectives as visualized to be achieved should be clearly outlined and these should be itemized. These objectives will have indicated the major aspects of the study to be undertaken.

#### **Operational Definition:**

- It is definition of a term specially telling how it will be measured examples:
- Efficacy: These can be measured.
  - o Time taken in relief of symptoms which be pain, fever, cough, heart burn etc.
  - o Taking into account number of side effects.
  - o Time taken by complete recovery.

Student is requirement to specify how he/she will measure efficacy.

#### **Hypothesis**

A hypothesis is a statement showing expected relation between 2 variables. A hypothesis is needed in the following study designed.

- All interventional studies
- Cohort
- Case Control
- Compressive Cross Sectional

#### **Review of Literature**

- What other people had to stay this topic(s) (be sure to cite your references, and quotes as appropriate)
- What other people did on this topic or related topics?
- Student must study at least 10 original research papers before writing of synopsis.





#### 4) **Materials and Methods**

A plan of work describing the various aspects of the study in a logical sequence along with the methodologies to be employed, are the most important aspects of any research plan.

**Study design:** Mention the name of the appropriate study design.

**Setting:** Name and place where the research work is to be conducted.

**Duration of Study:** How long will the study take with date?

**Sample Size:** How too many patients will be included. If there are groups, how many per group?

**Sampling Technique:** Type of sampling technique.

**Sample Selection:**

**Inclusion Criteria:** on what basis will patients be inducted in the study?

**Exclusion Criteria:** on what basis will patients be excluded from the study?

**Date Collection Procedure:** A detail account of how the researchers will perform research; how he / she will measure the variable.

**It includes:** Identification of the study variables

Methods' of collection data

Data collection tools (proforma /questionnaire)

Data Analysis Procedure: relevant details naming software to be used, which descriptive statistics and which test of significance if and when required, specifying variables where it will be applied.

Outcomes of Utilization: Describe in which way the expected results of your study can be useful in designing and delivery of health care system.

#### 6) **Place of Work and Facilities Available.**

In order to complete the proposed research some specialized facilities may be required. Therefore, it is important to identify the place where the research work will be undertaken and whether the resources and facilities required for doing the research are available.

#### 7) **References**

Synopsis should contain at the end a list of references. All references in the text must be in and at the end must be in Vancouver style and number of citations should not be less than fifteen (15) out of which 5 references must be from book. References should include a number of books, list of articles published in research journals.

- Web page do not count. Wikipedia is not appropriate.
- Cite the papers/Books that you used.



### **Citation in Text:**

A number is allocated to a source in the order in which it is cited in the text. If the source is referred again, the same number is used.

- Use Arabic Numerals (1,2,3,4,5,6,7,8,9)
- Reference at the end:
- In Vancouver style.

### **Examples:**

**Journal:** Author AA, Author BB, Author CC, Author DD. Title of article, Abbreviated title of journal. Date of publication YYYY month; volume number (issue number): page number  
Petitti DB, crooks VC, Buck walter JG, Chiu V.'Blood pressure levels before dementia. Arch Neurol 2005 Jan; 62(1):112\_6.

### **Book:**

Author AA, Title of book. # Edition [if not first]. Place of publication: publisher; year of \*\*carlson BM' Human embryology and developmental biology 4th ed..St. Louis: Mosby; 2009 541p.it will be difficult to define an over all length of synopsis for the post graduates in such different field of study. whereas it should be concise as far as possible and avoid repetition, it should also provide sufficient details on the various aspects mentioned above to show that the research involved has been well understood and planned, and it is of an acceptable academic merit. The total length of synopsis may round from 1500 to a few thousand words.

### **Data Collection Instrument:**

The researcher must attach as an annex, the proforma or questionnaire with the help of which he/she intends to collect data. The proforma questionnaire must match the objectives and must not contain irrelevant section like inclusion and exclusion criteria etc.

### **Additional Requirements:**

- 1) **Font Shape:** Time New Roman
- 2) **Font Size**  
**Main heading:** 14 bold and underline  
**1st subheading:** 12 bold  
**2nd subheading:** 12 bold and italic
- 3) **Line space:** 1.5
- 4) **Paragraph Spacing :**0
- 5) **Character Spacing:** Normal

Research supervisors are requested to make sure that the synopsis submitted by their research students follows the format of warning the synopsis.

- 6) **Margins:**

At least 3.17-3.81 cm on the left hand side, 2-2.54 cm at the top bottom of the page and 1.27-1.90 cm at the outer edge. The best position for the page number is at top center.



## 13. MTAE (MID TERM ASSESSMENT EXAMINATION)

### MTAE ASSESSMENT PROTOCOLS

After completion of first two years training in MS / MD Trainees have to go through midway MTA (summative assessment) examination, which is scheduled two times in March and October of each year. At the end of two years of training, every resident of MS/MD must be assessed internally by the concerned supervisor and be submitted secretly to Director PGMC.

The internal assessment described below has a marked quantification, and resident must have to secure 20 marks as an eligibility requirement to sit in MTA examination. While there should not be zero marks in any component of this assessment.

#### A) The Internal Assessment

also known as formative evaluation leads the mentor to identify not only the core qualities of intellectual leadership but also deficiencies on interest and hardworking in trainee towards proper learning goals and intervention and simultaneously encourages and drives the trainee to master the required skills and knowledge within stipulated time.

This internal assessment comprises 25 marks with following distribution.

|      |                                 |         |
|------|---------------------------------|---------|
| i)   | Synopsis(Submitted to Approved) | 5 marks |
| ii)  | Workshops                       | 5 marks |
| iii) | Logbook                         | 5 marks |
| iv)  | Behaviors                       | 2 marks |
| v)   | Regularity                      | 3 marks |
| vi)  | Surgical Skills (Emergency)     | 5 marks |

**TOTAL MARKS**

**25 MARKS**

#### The MTA Examination Consist of Two Components.

- i) Theoretical examination 200 marks
- ii) Practical examination 200 marks

**I-Theoretical Examination** also known as theoretical assessment is held in BCQ's format and comprises:

- **Paper-I** with 100 BCQ as described in following format of MS/MD  
Paper-I shall cover the course content comprising principles and practice of in relevant subjects i.e:- General Surgery, Surgery & Allied, General Medicine, Medicine & Allied.
- **Paper-II** which comprises of 100 BCQ's and is separate for each discipline, which covers the core knowledge of each specific speciality in the line of course content requirement described in curriculum/ PGMC.

|                |           |
|----------------|-----------|
| Paper-I (BCQs) | 100 marks |
| Paper-II(BCQs) | 100 marks |

**TOTAL MARKS**

**200 MARKS**

The time period for each paper will be 3 hours.



The result of MTA theory examination shall be displayed on notice board of PGMC office ([www.pumhs.edu.pk](http://www.pumhs.edu.pk)).

## **II- Practical Examination:**

In this component of examination the candidate is evaluated conceptually and practically by Task Oriented Assessment of Clinical Skills (TOACS).

- The candidate who qualify theory examination will be eligible to take TOACS examination.
- MTA-TOACS examination will tentatively be scheduled within three weeks of theory examination.
- In the TOACS, the candidate will be evaluated on procedure, X-rays, ECG, Echo, CT scan, Laboratory findings, Practical station, instruments, specimen etc as per speciality described in respective approved Curricula.
- This component of examination will carry weightage of total 200 Marks.
- This component of examination will consist of 15 stations(total 200 marks) and 7 minutes per station, arranged in examination hall and the candidates have to rotate through all of stations in turn. The TOACS stations will be:
  - i) Static-3Each station 10 marks
  - ii) Observational- 2Each station 10 marks
  - iii) Interactive – 10Each station 15 marks

Note. Material for stations and time for stations can vary as per requirement of speciality.





## 14. THESIS

Every student registered as post graduate shall carry out work on an assigned research project under the guidance of a recognized post graduate teacher, the result of which shall be written up and submitted in the form of a thesis. The thesis submitted by MD/MS candidate shall comply with the following conditions.

- a) It shall form a distinct contribution to the knowledge and efforts evidence of originality, shown by the discovery new facts, by the exercise of independence critical judgment and / or by the invention of new methods of investigations.
- b) It shall be written in English and the presentation shall must be satisfactory for publication. Thesis will go through plagiarism software before forwarding to the experts for approval.
- c) Any part of thesis which has been published by the submission of the thesis may be appended at the end of the thesis.
- d) The thesis shall be typed on A4 size (11.69" x 8.27") paper width margins of 1 - 1/2" on the left and 1 "to right, top and bottom of each page. The thesis shall be hard bound with the black cloth cover and golden lettering on the front and the back.

Work for writing the Thesis is aimed at contributing to the development of a spirit of enquiry, besides exposing the student to the techniques of research, critical analysis, acquaintance with the latest advances in medical science and the manner of identifying and consulting available literature. Thesis shall be submitted at least six months before the final theoretical and clinical / practical examination.

The thesis shall be a bound volume of a minimum of 100 pages and not exceeding 150 pages of typed matter (Double line spacing and on one side only) excluding certification, acknowledgements, Thesis should consist of:

- (a) Introduction
- (b) Review of literature
- (c) Aims and objectives
- (d) Material and methods
- (e) Result
- (f) Discussion
- (g) Summary and conclusion
- (h) Tables
- (i) Annexure
- (j) References

Four copies of thesis shall be submitted six months prior to the commencement of the final theory examinations on the date prescribed by the Controller of Examinations of this University. The thesis should be approved by the Professor of that branch and the same has to be forwarded to the Controller of Examinations, by the head of the department through the Dean of the college.

Two copies in addition are to be submitted as an electronic version of the entire thesis in a standard C.D. format by mentioning the details and technicalities used in the C.D. format.

The thesis shall be examined by a minimum of three examiners; one internal and two external examiners, who shall not be the examiners for Theory and clinical; and on the acceptance of the thesis by two examiners, the student shall be allowed to appear for the final examination.



## **Part-II (Final) MS/MD Examination**

### **Total marks: 600**

All candidates admitted in MS/MD courses shall appear in Part-II examination at the end of structured training program (end of 4th or 5th calendar years after having successful in MTAE and completion and approval of research work/thesis.

**The Part-II (MS/MD) Degree programs (Total 600 Marks) comprises of :**

A. Defense of Research work / Thesis = 100 Marks.

**NOTE.** This component of examination is carried out during the practical examination, where the candidate will defend his/her research work/thesis in front of external examiners.

### **B. Theory = 200 Marks**

- There shall be 02 theory papers each of 100 marks (total 200 marks)
- i. Paper-I = 100 BCQs (100 Marks)
- ii. Paper-II = 10 SAQs (100 Marks)

**NOTE.** The table of Specification for theory papers for MS/MD 4/5 years programs is incorporated in approved curriculum respectively.

### **C. Practical Examinations = 300 Marks.**

- This shall comprise of 3 components
- i. One long case = 100 Marks
- ii. Four short cases (each case 25 marks ) = 100 Marks  
(MD Program)

### **iii. TOACS = 100 Marks**

Only those candidates who pass in theory papers will be eligible to appear in the Oral & Practical/Clinical Examination. Whereas the Clinical/ Oral exam is conducted with the assistance of real patients. When presented with a patient, the candidate must take a history, perform a clinical examination, and recommend a management plan. The candidate will be thoroughly tested for in-depth knowledge of his speciality during the oral component of this part of the exam.

**TOACS:** In TOACS number of stations are variable as per subject prescribed in curriculum and minimum number of stations should not be less than 10 and more than 25. Time per station can vary as per requirement of speciality.



**LONG CASE:** In this part of examination, every candidate has to take the history in front of the examiners and then he has to do the examination of his patient including the General Physical examination and the Local Examination of the particular case. After History and Examination, Candidate will be asked for any Investigation/s to develop scientific diagnosis, and then the-examiner will give candidate all the relevant information which s/he may ask. After that, candidate has to make a summary of his/her case. All this has to be done within a time period of 30 minutes. Candidate will be given time for the presentation of his/her case, both examiners will analyze his/her presentation skills. Then there will be a discussion by the first examiner on History and Examination and also about the different diagnoses. Then there will be discussed the second examiner on management, prognosis and recent advances. Total time for long case is one hour.

**SHORT CASE:** In this part of examination, the candidate is given a task by examiners, which he/she performs on patient in front of them in 5 minutes, while examiners observe and assess him/her without interrupting the candidate. After candidates completes his/her task then candidates have 5 minutes to present his case and involved in case discussion with examiners.

**\*Note:**

**I) In certain speciality programs number of long cases or short cases can vary and material, number of stations, time per station in TOACS can vary as per their approved curricula. However the total marks for practical examination will remain same.**

**II) A candidate should secure not less than 50% in each head viz theory papers and clinical examination (ABC) vis-à-vis 75 marks in each theory paper and 50 marks in TOACS, long case and short case each. Indeed the candidates are required to pass theory and practical / clinical examination separately having secured not less than 60% marks cumulatively, to be declared SUCCESSFUL.**



**(Quantitative Comprehensive Clinical Assessment) Example of Long Case:**

**Seat No:** \_\_\_\_\_ **Case.No.1** \_\_\_\_\_

| <b>AREAS OF ASSESSMENT</b>  | <b>TOTAL MARKS</b> | <b>OBTAINED MARKS</b> |
|---|--------------------|-----------------------|
| Obtained information consent  | 10                 |                       |
| Used correct clinical methods   |                    |                       |
| Performed examination of the relevant system  |                    |                       |
| Gave correct findings   | 10                 |                       |
| Gave logical interpretations of findings  | 10                 |                       |
| Justifies diagnosis<br>Differential Diagnosis   | 10                 |                       |
| Discussion  | 10                 |                       |
| <b>HISTORY TAKING &amp; PHYSICAL EXAMINATION</b>  |                    |                       |
| Combined clinical assessment by examiner 1&2 -<br>Introduce self to patient, listens patiently and attentively, is polite, obtains informed consent. <ul style="list-style-type: none"><li>• Asks necessary and relevant questions</li><li>• Uses correct clinical methods is systemic and examines the patient as a whole (including appropriate exposure and re-draping - Performs examination of relevant system in detail).</li></ul> | 10                 |                       |
| Presentation Skills   | 05                 |                       |
| Give Correct findings   | 10                 |                       |
| Give logical interpretation of findings   | 15                 |                       |
| Justifies diagnosis/DD  | 10                 |                       |
| <b>Total</b>  | <b>100</b>         |                       |

**Examiner-1 (50%Marks)-----Examiner-2(50% Marks) -----**





## 15. DECLARATION OF RESULT OF ENTRY EXAMINATION.

- a) The candidate must have passed all components of Entry Examination securing at least 50% marks in each component of the examination and 60 % in total to be declared to have passed the examination. Cumulative score of 60 % marks to be calculated by adding up secured marks of each component of the examination and then calculating its percentage.
- b) Entry examination shall be valid for that particular match or admission and shall be valid for subsequent admissions for two years.
- c) Passing in Entry Examination shall not automatically guarantee admission to training program which will be dependent on available slots.

## 16. FEE STRUCTURE

- 1) The fee structure for these programs is clearly defined, including admission fee , tuition fees and other charges. The fees should be reasonable and affordable for the students.
- 2) The University will charge the fee (non refundable) for the following components at the time of admission. The exact quantum of fee may be decided and adjusted from time to time by the university.
  - a) Registration Fee
  - b) Four Mandatory Workshops fee
  - c) Yearly tuition fee to be deposited according to a schedule (SOP's to be developed by the academic council in consultation with Director Finance from time to time).
  - d) Hostel fee if university accommodation is availed
  - e) Utility Charges (Electricity, Gas and Water) if hostel accommodation is availed.
  - f) After a default of more than 30 days duration for the payment of any of the dues, the candidate will be expelled from the program except in special circumstances where it will be endorsed by the Deans Committee.
- 3) The candidate will be allowed one time change of course after admission but this will be within the domain of previously selected MD or MS programs, subject to availability of seats and no objection certificate from the training unit.
- 4) The change of speciality of training shall be permissible within 06 months from the date of admission and the candidate will pay a non refundable transfer fee.
- 5) If change of speciality allowed, it will be considered a new admission and would start training from the next induction date of MD/MS & other degree courses program
- 6) In case of change of speciality the candidate will prepare new synopsis but the credit of attended mandatory workshops will be transferrable.



## 17. ACCOMMODATION FACILITIES.

The availability of accommodation facilities for only female students specified, along with the related costs and amenities.

## 18. CODE OF CONDUCT.

A Code of Conduct is established for the students, faculty and staff to ensure that they adhere to ethical and professional standards.

## 19. STUDENT SUPPORT SERVICES.

Support services, including mentoring, counseling and career guidance will be provided to the students to help them cope with academic and personal challenges.

## 20. DISCIPLINARY ACTION

1. PUMHSW have a disciplinary committee to deal with all the disciplinary matters.
2. The Disciplinary committee is empowered to take any disciplinary action on cases reported by Chairman of the respective Department.
3. Any student whose name appears in the F.I.R pertaining to any non-bailable offence as specified in the criminal procedure code (Cr.P.C) will be suspended during the pendency of the cases, he / she will not be allowed to attend classes or take up any examination, legal advice to be sought.
4. The action for situations warranting suspension, rustication or expulsion will be according to the specified procedures as follows.
  - a. Disciplinary committee may initiate disciplinary action against any student who is not found obedient in accordance to the disciplinary rules and regulation of PUMHSW.
  - b. Before taking any action, the Director PGMC shall serve a show cause notice to the student indicating briefly the charges against him. The concerned student will have to give a written reply within seven days after which the student can be called for personal hearing if necessary.



## 21. RULES OF CONDUCT

- I. No student shall from society/association/organization.
- II. No outside person will be invited by the students to address any meeting within premises of the PUMHSW.
- III. The Director PGMC can issue disciplinary orders of permanent or temporary nature to any student who is found against the conducive academic environment of PUMHSW.
- IV. Students will not be permitted to do any parallel(during residency)/ Private practice or job(Part Time/Full Time).
- V. If any student wants to publish his scientific or literary article, he / she must have to get the countersigned draft by the Concerned Chairperson & Dean and approval by the Ethical & Research Committee of PUMHSW. He /She is also required to submit the copy of the draft for record at PGMC.
- vi. Students will not be allowed to address the national press on the following subjects.
- vii. Political or allied subject.
- viii. Matters directly or indirectly connected with the administration of the institute.
- ix. Matters pertaining to the policies of Government.
- x. Students are forbidden to address higher authorities directly. Any communication intended for higher authorities needs to be enrooted through Registrar PUMHSW.
- xi. Smoking and mischievous activities are prohibited at PUMHSW.
- xii. Harassment in any manner is strictly prohibited.

## 22. RUSTIFICATION

A student may be rusticated on the recommendation of disciplinary committee of the institute for a period of three years due to any of the following acts:

- I. Taking forceful possession, making unauthorized use or damaging any property.
- II. Involving himself in any agitational activity.
- III. Found indulging in activities, prejudicial and detrimental to the good order of the Institute.
- IV. Adopting unfair means during examination.
- V. Disobeying an orders of suspension passed against him/her.
- VI. Any other act, which the institute or the disciplinary committee consider inappropriate.



### 23. SUSPENSION

A student shall be liable for suspension up to six months if he/she commits any of following acts:

- I. Use of unfair means during examination. The Factotum / Invigilator can suspend any student who is found indulging in unfair means during examination further action against him will be taken by the committee for breach of the rules and regulation. He/ She will not be allowed to appear in the remaining part/papers for the examination till the final decision by the committee.
- II. Misbehaves or quarrels with any teacher or member of the staff.
- III. Is generally disobedient.
- IV. Spread false rumours.
- V. Uses unbecoming, indecent & filthy language.
- VI. Incites other students to violence.
- VII. Is inappropriately dressed.
- VIII. shouts, abuses, quarrels of fights with fellow students.
- IX. Raises slogans to hurt others, politically or religiously.
- X. Interferes with the administration including the mode or schedule of the examination.
- XI. Indulges in acts of immorality
- XII. Indulges in any kind of political activity including displaying posters or play cards within the institute.
- XIII. Remains absent continuously for more than 04 weeks without prior permission.
- XIV. Suspended period shall be counted as deficit in training that must be completed by additional period of training

### 24. EXPULSION

A student is liable to be expelled from the institute on the recommendation of disciplinary committee if he/she commits any of the following act and this order shall be final and irrevocable if he/she:

- I. Is found in possession of fire arms or lethal weapons or Narcotic drugs in the institutional premises, examination hall or any other areas as specified by the Institute administration.
- II. Remains absent for more than three months without permission of the Vice Chancellor / Director PGMC, his / her admission shall be cancelled by the disciplinary committee of the Institute.





## PLEASE READ AND FOLLOW THE INSTRUCTIONS BEFORE FILLING THE APPLICATION FORM

- ◆ Please Complete the application in all respects, Incomplete/Short documented application will not be entertained.
- ◆ Please write in CAPITAL letters & use Black Ink. Attach Photocopies of all relevant documents. Separate form to be filled for each course.
- ◆ One candidate can apply for both, degree & diploma course in the same speciality Four passport size & one 1"x1" recent photograph.
- ◆ MBBS Degree Certificate.
- ◆ Consolidated or separate marks sheet of all professional examinations passed. Matriculation Certificate.
- ◆ Certificate of any other qualification(s). Publication (s) (if any).
- ◆ Valid PMDC registration certificate. House Job Certificate (one year).
- ◆ Registrarship / Residency or other training certificate, Certificate of Experience as M.O/Demonstrator (if applicable). Certificate (s) showing service in rural area (if any).
- ◆ Computerized National Identity Card (CNIC). Domicile Certificate of the Candidate.
- ◆ Certificate of present posting/employment.
- ◆ N.O.C from parent department (for-In-service candidates only). Bank Challan of **Rs. 3,000/=** for Prospectus only
- ◆ FCPS-I Pass Certificate (for FCPS-II training) along with Registration Fee.

# TABLE OF SPECIFICATION



## Course Content with Table of Specification For Entry Test of Various Level Iib Qualification (Few Example's)

| Phil Entry Test of Bio-Chemistry (100 BCQ's) |                  |
|--|------------------|
| 1. Cell & Biophysics                         | 12 BCQ's         |
| 2. Chemistry of Carbohydrates                | 15 BCQ's         |
| 3. Chemistry of Protein I                    | 15 BCQ's         |
| 4. Porphyrin                                 | 03 BCQ's         |
| 5. Chemistry of Lipids                       | 15 BCQ's         |
| 6. Enzymes                                   | 05 BCQ's         |
| 7. Minerals                                  | 05 BCQ's         |
| 8. Nutrition                                 | 05 BCQ's         |
| 9. Vitamins                                  | 10 BCQ's         |
| 10. Cho Metalolism                           | 05 BCQ's         |
| 11. Bio-energetics                           | 05 BCQ's         |
| 12. Endocrine                                | 05 BCQ's         |
| <b>TOTAL</b>                                 | <b>100 BCQ's</b> |

| M.Phil Entry Test of Physiology (100 BCQ's)      |                 |
|--|-----------------|
| 1. General Physiology, Cell & Gene               | 10 BCQs         |
| 2. Membrane Transport, Nerve & Muscle Physiology | 10 BCQs.        |
| 3. C.V.S   | 10 BCQs         |
| 4. Body Fluids and Kidney                        | 10 BCQs         |
| 5. Blood & Immunity                              | 10 BCQs         |
| 6. Respiratory System                            | 10 BCQs         |
| 7. Central and Peripheral nervous                | 10 BCQs         |
| 8. Special Senses Physiology                     | 10 BCQs         |
| 9. GIT Physiology                                | 10 BCQs         |
| 10. Endocrine and reproductive system            | 10 BCQs         |
| <b>Total</b>                                     | <b>100 BCQs</b> |

| Entry Test of Pharmacology (100 BCQ's) |                  |
|--|------------------|
| 1. General Pharmacology                | 15 BCQ's         |
| 2. Autonomic Nervous System            | 14 BCQ's         |
| 3. Cardio Vasular Syetem               | 10 BCQ's         |
| 4. Diuretics                           | 03 BCQ's         |
| 5. Blood                               | 04 BCQ's         |
| 6. Autacoid                            | 06 BCQ's         |
| 7. GIT                                 | 04 BCQ's         |
| 8. Respiratory                         | 06 BCQ's         |
| 9. Endocrines                          | 06 BCQ's         |
| 10. NSAIDs                             | 02 BCQ's         |
| 11. Drug Treatment of Gout             | 02 BCQ's         |
| 12. Drug Treatment of Migraine         | 02 BCQ's         |
| 13. Central Nervous System (CNS)       | 10 BCQ's         |
| 14. Antimicrobials                     | 10 BCQ's         |
| 15. Therapeutics                       | 06 BCQ's         |
| <b>TOTAL</b>                           | <b>100 BCQ's</b> |

| Syllabus for Entry Test Diploma in Ophthalmology |                  |
|--|------------------|
| 1. Embryology of Eye                             | 20 BCQ's         |
| 2. Anatomy of Eye                                | 20 BCQ's         |
| 3. Physiology of Eye                             | 20 BCQ's         |
| 4. Pharmacology of Eye                           | 20 BCQ's         |
| 5. Pathology of Eye                              | 20 BCQ's         |
| <b>TOTAL</b>                                     | <b>100 BCQ's</b> |

| DMJ Entry Test                                 |                  |
|--|------------------|
| 1. Forensic Medicine:                          | 50 BCQ's         |
| 2. Pathology: General Pathology:               | 15 BCQ's         |
| Special Pathology: Serology:                   |                  |
| 3. Applied Morbid Anatomy: General: Osteology: | 15 BCQ's         |
| Embryology: Odontology:                        |                  |
| 4. Applied Physiology:                         | 10 BCQ's         |
| 5. Applied Pharmacology                        | 05 BCQ's         |
| 6. Biochemistry: General: Enzymology:          | 05 BCQ's         |
| <b>TOTAL</b>                                   | <b>100 BCQ's</b> |

| DA / MCPS Entry Test in Anesthesiology                       |                  |
|--|------------------|
| 1. Airway  | 10 BCQ's         |
| 2. Nervous System  | 05 BCQ's         |
| 3. Cardiovascular System                                     | 05 BCQ's         |
| 4. Respiratory System  | 05 BCQ's         |
| 5. Pregnancy   | 05 BCQ's         |
| 6. Pain  | 05 BCQ's         |
| 7. General Pharmacology                                      | 05 BCQ's         |
| 8. General Anesthetics (inhalational & intravenous)          | 10 BCQ's         |
| 9. Local Anesthetics   | 05 BCQ's         |
| 10. Hypnotics, Sedatives, Opioids, NSAIDs & other analgesic. | 10 BCQ's         |
| 11. Neuromuscular Blocking Agents (including antagonists)    | 10 BCQ's         |
| 12. Resuscitations   | 10 BCQ's         |
| 13. Management of Shock (including Fluid )                   | 05 BCQ's         |
| 14. Resuscitation & Blood Transfusion)                       | 10 BCQ's         |
| <b>TOTAL</b>   | <b>100 BCQ's</b> |



## Course Content with Table of Specification of Level III (MS / MD Part-I) Paper I & Paper II of Various Discipline (Few Example's)

The paper-I of all the disciplines is General, However the number of BCQ's per topic may vary as per importance of that subject as in relevance to discipline (Total 100 BCQ's),

Paper-II is speciality specific (Total 100 BCQ's).

### MS / MD Paper-I, II Contents of:

- ❖ M.S. General Surgery,
- ❖ Urology,
- ❖ Orthopedics,
- ❖ Neurosurgery,
- ❖ Paeds Surgery &
- ❖ Gynae Obstetrics,
- ❖ M.D General Medicine,
- ❖ M.D. Paeds Medicine &
- ❖ M.D. Cardiology.

**Total BCQ's 100**

- ❖ Anatomy
- ❖ Physiology
- ❖ Pathology
- ❖ Bio-Chemistry
- ❖ Pharmacology
- ❖ Behavioral Sciences
- / Community Medicine.

**Total BCQ's 100**

**Score:** There is no negative marking, for each answer, candidates receive a mark of +1 for each correct answer and a mark of 0 for each incorrect answer. Moreover, marks will not be awarded where more than one answer is given or where the answer sheet is spoiled or unreadable.



### MS Orthopedics Part-I (Applied Basic Sciences Paper-I)

|   |          |
|---|----------|
| 1. Anatomy                              | 30 BCQ's |
| 2. Physiology                           | 20 BCQ's |
| 3. Pathology                            | 20 BCQ's |
| 4. Biochemistry                         | 10 BCQ's |
| 5. Pharmacology                         | 10 BCQ's |
| 6. Behavioral Sciences                  | 05 BCQ's |
| 7. Biostatistics & Research Methodology | 05 BCQ's |

**TOTAL 100 BCQ's**

### MD (Internal Medicine) Part-I (Applied Basic Sciences) Paper-I

|   |          |
|---|----------|
| 1. Anatomy                              | 10 BCQ's |
| 2. Physiology                           | 25 BCQ's |
| 3. Pathology                            | 20 BCQ's |
| 4. Biochemistry                         | 10 BCQ's |
| 5. Pharmacology                         | 25 BCQ's |
| 6. Behavioral Sciences                  | 05 BCQ's |
| 7. Biostatistics & Research Methodology | 05 BCQ's |

**TOTAL 100 BCQ's**

### MD (Internal Medicine) Part-I (Paper-II)

|   |          |
|---|----------|
| 1. Electrolytes Imbalance   | 08 SBQ's |
| 2. Acid Base Balance  | 08 SBQ's |
| 3. Haematology and Oncology   | 08 SBQ's |
| 4. E. / Cardiovascular Vascular System  | 06 SBQ's |
| 5. Molecular and Genetic Factors in Disease                                   | 06 SBQ's |
| 6. Immunological Factors in Disease   | 06 SBQ's |
| 7. Environmental & Nutritional Factors in Diseases                            | 10 SBQ's |
| 8. Infectious Diseases (Common Infectious Diseases)                           | 06 SBQ's |
| 9. Critical Illness   | 15 SBQ's |
| 10. Emergencies (Cardiovascular, Respiratory, Neurological, Endocrinological) | 15 SBQ's |
| 12. Aging and Disease   | 06 SBQ's |
| 13. Poisoning   | 06 SBQ's |

**TOTAL 100 SBQ's**

### MS Orthopedics Part-I ( Paper-II)

|   |          |
|---|----------|
| 1. Orthopedics Diagnosis                                | 02 BCQ's |
| 2. Infection (Bone/Surgical/Skin/Soft Tissue)           | 04 BCQ's |
| 3. Rheumatic Disorders                                  | 02 BCQ's |
| 4. Crystal Deposition Disorders                         | 02 BCQ's |
| 5. Osteoarthritis                                       | 02 BCQ's |
| 6. Osteo Necrosis and Related Disorder                  | 03 BCQ's |
| 7. Metabolic and Endocrine Disorder                     | 05 BCQ's |
| 8. Genetic Disorders                                    | 02 BCQ's |
| 9. Musculoskeletal                                      | 05 BCQ's |
| 10. Neuromuscular Disorders                             | 02 BCQ's |
| 11. Peripheral Nerve                                    | 03 BCQ's |
| 12. Orthopedics Procedures                              | 04 BCQ's |
| 13. Pectoral Griddle & Shoulder                         | 02 BCQ's |
| 14. Elbow   | 03 BCQ's |
| 15. Wrist   | 03 BCQ's |
| 16. Hand  | 02 BCQ's |
| 17. Back & Neck   | 02 BCQ's |
| 18. Hip   | 03 BCQ's |
| 19. Knee  | 02 BCQ's |
| 20. Ankle & Foot  | 02 BCQ's |
| 21. Management of Major Injuries                        | 04 BCQ's |
| 22. Systemic Response to Injuries and Metabolic Support | 02 BCQ's |
| 23. Fluid and Electrolytes Management                   | 02 BCQ's |
| 24. Hemostasis, surgical bleeding and Transfusion       | 02 BCQ's |
| 25. Shock   | 02 BCQ's |
| 26. Principle of Fractures & Treatment                  | 04 BCQ's |
| 27. Injuries of Upper arm, shoulder and elbow           | 03 BCQ's |
| 28. Injuries of forearm wrist and hand                  | 03 BCQ's |
| 29. Injuries to pelvis and spine                        | 03 BCQ's |
| 30. Injuries to Femur, hip and knee                     | 03 BCQ's |
| 31. Injuries to Leg, ankle and foot                     | 03 BCQ's |
| 32. General Surgery                                     | 03 BCQ's |
| 33. Neuro Surgery                                       | 02 BCQ's |
| 34. Plastic Surgery                                     | 02 BCQ's |
| 35. Neuro Surgery                                       | 02 BCQ's |
| 36. Radiology   | 02 BCQ's |
| 37. Vascular Surgery and Disease                        | 03 BCQ's |

**TOTAL 100 BCQ's**





### M.D (Cardiology) Part -I (Paper-I)

|   |                  |
|---|------------------|
| 1. Anatomy (Cardiovascular 70%)         | 10 BCQ's         |
| 2. Physiology (Cardiovascular 70%)      | 25 BCQ's         |
| 3. Pathology (Cardiovascular 70%)       | 20 BCQ's         |
| 4. Biochemistry (Cardiovascular 70%)    | 10 BCQ's         |
| 5. Pharmacology (Cardiovascular 70%)    | 25 BCQ's         |
| 6. Behavioral Sciences                  | 05 BCQ's         |
| 7. Biostatistics & Research Methodology | 05 BCQ's         |
| <b>TOTAL</b>                            | <b>100 BCQ's</b> |

### M.D (Cardiology) Part -I (Paper-II)

|   |                  |
|---|------------------|
| 1. Symptomatology of CVS & Internal Medicine                    | 10 BCQ's         |
| 2. General & CVS Physical Exam:                                 | 10 BCQ's         |
| 3. Lab investigation: Biochemistry                              | 10 BCQ's         |
| 4. Lab investigations: Heamatology                              | 10 BCQ's         |
| 5. Radiology related to CVS & Interpretations                   | 05 BCQ's         |
| 6. Basics of ECG & Interpretations (including common arrythois) | 15 BCQ's         |
| 7. Diabetics mellitus   | 03 BCQ's         |
| 8. Hypertension   | 05 BCQ's         |
| 9. Cardiac failure & Valvular heart disease                     | 05 BCQ's         |
| 10. Cardiac vascular risk factors                               | 05 BCQ's         |
| 11. Atherosclerotic coronary heart disease                      | 02 BCQ's         |
| 12. Cardiomyopathies  | 05 BCQ's         |
| 13. Pericardial heart disease                                   | 03 BCQ's         |
| 14. Common metabolic disorders and endocrine disorders          | 02 BCQ's         |
| 15. Acid base and electrolyte related disorders                 | 02 BCQ's         |
| <b>TOTAL</b>  | <b>100 BCQ's</b> |

### MS Otorhinolaryngology (ENT) Part –I (Paper-I)

|                        |                  |
|------------------------|------------------|
| 1. Anatomy             | 25 MCQ's         |
| 2. Physiology          | 20 MCQ's         |
| 3. Pathology           | 15 MCQ's         |
| 4. Biochemistry        | 15 MCQ's         |
| 5. Pharmacology        | 15 MCQ's         |
| 6. Behavioral Sciences | 10 MCQ's         |
| <b>TOTAL</b>           | <b>100 MCQ's</b> |

### MS Otorhinolaryngology (ENT) Part –I (Paper-II)

|   |                  |
|---|------------------|
| 1. Type of hearing loss                 | 02 MCQ's         |
| 2. Assessment of vestibular functions   | 02 MCQ's         |
| 3. Disease of external ear              | 02 MCQ's         |
| 4. Myringotomy                          | 03 MCQ's         |
| 5. Otitis media                         | 03 MCQ's         |
| 6. Cholesteatoma                        | 02 MCQ's         |
| 7. Chronic Supportive otitis media      | 02 MCQ's         |
| 8. Otosclerosis                         | 03 MCQ's         |
| 9. Bell's palsy                         | 03 MCQ's         |
| 10. Facial nerve disorder               | 02 MCQ's         |
| 11. Meniere's disease                   | 02 MCQ's         |
| 12. Mastoid Surgery                     | 02 MCQ's         |
| 13. Tumor of Middle Ear                 | 02 MCQ's         |
| 14. Disease of External Nose            | 02 MCQ's         |
| 15. Nasal Septum & its Disease          | 04 MCQ's         |
| 16. Acute and Chronic Rhinitis          | 02 MCQ's         |
| 17. Granulomatous Diseases              | 02 MCQ's         |
| 18. Allergic Rhinitis                   | 04 MCQ's         |
| 19. Nasal Polyp                         | 03 MCQ's         |
| 20. Epistaxis                           | 04 MCQ's         |
| 21. Paranasal sinus disease             | 03 MCQ's         |
| 22. Trauma face                         | 02 MCQ's         |
| 23. Neoplasm of Paranasal Sinuses       | 02 MCQ's         |
| 24. Vasomotor rhinitis                  | 02 MCQ's         |
| 25. Acute tonsillitis                   | 02 MCQ's         |
| 26. Complication of chronictonsillitis  | 03 MCQ's         |
| 27. Snoring and sleep apnea             | 02 MCQ's         |
| 28. Tumor of the hypopharynx            | 02 MCQ's         |
| 29. Acute and chronic laryngitis        | 02 MCQ's         |
| 30. Vocal nodules                       | 02 MCQ's         |
| 31. Carcinoma Larynx                    | 02 MCQ's         |
| 32. Tracheostomy                        | 03 MCQ's         |
| 33. Foreign bodies of air passages      | 02 MCQ's         |
| 34. Disorder of esophagus               | 03 MCQ's         |
| 35. Dysphagia                           | 02 MCQ's         |
| 36. Tumor of the hypopharynx            | 02 MCQ's         |
| 37. Thyroid disease                     | 02 MCQ's         |
| 38. Neoplasm of Salivary glands         | 02 MCQ's         |
| 39. Functional Endoscopic sinus surgery | 03 MCQ's         |
| 40. Director Laryngoscopy               | 03 MCQ's         |
| <b>TOTAL</b>                            | <b>100 MCQ's</b> |



### M.S (Ophthalmology) Part -I (Basic Sciences) Paper-I

|   |                  |
|---|------------------|
| 1. Anatomy...Neuro Anatomy + Head & Neck                    | 25 BCQ's         |
| 2. Physiology...General Physiology + Physiology of Eye      | 25 BCQ's         |
| 3. Pharmacology...General Pharmacology+ Pharmacology of Eye | 25 BCQ's         |
| 4. Pathology...General Pathology + Pathology of Eye         | 25 BCQ's         |
| <b>TOTAL</b>  | <b>100 BCQ's</b> |

### M.S (Ophthalmology) Part -I

|                  |                  |
|------------------|------------------|
| 1. Eye LID       | 10 BCQ's         |
| 2. Conjunctiva   | 10 BCQ's         |
| 3. Cornea        | 10 BCQ's         |
| 4. Lens          | 05 BCQ's         |
| 5. Uvea          | 05 BCQ's         |
| 6. Glaucoma      | 15 BCQ's         |
| 7. Vitreous      | 10 BCQ's         |
| 8. Retina        | 10 BCQ's         |
| 9. Visual Pathwa | 10 BCQ's         |
| 10. Orbit        | 15 BCQ's         |
| <b>TOTAL</b>     | <b>100 BCQ's</b> |

### Syllabus for entry test diploma in Ophthalmology

|                        |                  |
|------------------------|------------------|
| 1. Embryology of Eye   | 20 BCQ's         |
| 2. Anatomy of Eye      | 20 BCQ's         |
| 3. Physiology of Eye   | 20 BCQ's         |
| 4. Pharmacology of Eye | 20 BCQ's         |
| 5. Pathology of Eye    | 20 BCQ's         |
| <b>TOTAL</b>           | <b>100 BCQ's</b> |

### M.S (Anaesthesiology) Part –I Paper-I

|                                    |                  |
|------------------------------------|------------------|
| 1. Airway                          | 10 BCQ's         |
| 2. Nervous System                  | 10 BCQ's         |
| 3. Cardiovascular System           | 10 BCQ's         |
| 4. Respiratory System              | 20 BCQ's         |
| 5. Renal System                    | 10 BCQ's         |
| 6. Liver & Metabolism              | 05 BCQ's         |
| 7. Hematology                      | 05 BCQ's         |
| 8. Endocrinology                   | 05 BCQ's         |
| 9. Neuromuscular Junction          | 05 BCQ's         |
| 10. Pregnancy                      | 05 BCQ's         |
| 11. Pain                           | 03 BCQ's         |
| 12. Physics & Clinical Measurement | 08 BCQ's         |
| 13. Monitoring                     | 04 BCQ's         |
| <b>TOTAL</b>                       | <b>100 BCQ's</b> |

### M.S (Anaesthesiology) Part -I Paper-II

|   |                  |
|---|------------------|
| 1. General Pharmacology                                     | 05 BCQ's         |
| 2. General Anaesthetics (inhalational & intravenous)        | 15 BCQ's         |
| 3. Local Anaesthetics                                       | 10 BCQ's         |
| 4. Hypnotics, Sedatives, Opioids, NSAIDs & other analgesics | 10 BCQ's         |
| 5. Neuromuscular Blocking agents (including antagonists)    | 10 BCQ's         |
| 6. Drugs acting on ANS                                      | 05 BCQ's         |
| 7. Drugs acting on Cardiovascular system                    | 05 BCQ's         |
| 8. Diuretics  | 05 BCQ's         |
| 9. Anticoagulants   | 05 BCQ's         |
| 10. Antihistamine   | 03 BCQ's         |
| 11. Antacids, Gastrokinetics & Antiemetics                  | 02 BCQ's         |
| 12. Corticosteroids   | 03 BCQ's         |
| 13. Shock   | 07 BCQ's         |
| 14. BLS   | 05 BCQ's         |
| 15. ACLS  | 10 BCQ's         |
| <b>TOTAL</b>  | <b>100 BCQ's</b> |



#### DA / MCPS Entry Test in Anaesthesiology

|   |          |
|---|----------|
| 1. Airway   | 10 BCQ's |
| 2. Nervous System   | 05 BCQ's |
| 3. Cardiovascular System  | 05 BCQ's |
| 4. Respiratory System   | 05 BCQ's |
| 5. Pregnancy  | 05 BCQ's |
| 6. Pain   | 05 BCQ's |
| 7. General Pharmacology   | 05 BCQ's |
| 8. General Anaesthetics   | 10 BCQ's |
| 9. Local Anaesthetics   | 05 BCQ's |
| 10. Hypnotics, Sedatives,<br>Opioids, NSAIDs & other analgesis. | 10 BCQ's |
| 11. Neuromuscular Blocking Agents<br>(including antagonists)    | 10 BCQ's |
| 12. Resuscitations (BLS & ACLS)                                 | 10 BCQ's |
| 13. Management of Shock   | 05 BCQ's |

**TOTAL 100 BCQ's**

#### Phil Entry Test of Bio-Chemistry (100 BCQ's)

|                               |          |
|-------------------------------|----------|
| 1. Cell & Biophysics          | 12 BCQ's |
| 2. Chemistry of Carbohydrates | 15 BCQ's |
| 3. Chemistry of Protein       | 15 BCQ's |
| 4. Porphyrin                  | 03 BCQ's |
| 5. Chemistry of Lipids        | 15 BCQ's |
| 6. Enzymes                    | 05 BCQ's |
| 7. Minerals                   | 05 BCQ's |
| 8. Nutrition                  | 05 BCQ's |
| 9. Vitamins                   | 10 BCQ's |
| 10. Cho Metalolism            | 05 BCQ's |
| 11. Bio-energetics            | 05 BCQ's |
| 12. Endocrine                 | 05 BCQ's |

**TOTAL 100 BCQ's**

#### M.Phil Entry Test of Physiology (100 BCQ's)

|   |          |
|---|----------|
| 1. General Physiology, Cell & Gene                  | 10 BCQs  |
| 2. Membrane Transport, Nerve &<br>Muscle Physiology | 10 BCQs. |
| 3. C.V.S  | 10 BCQs  |
| 4. Body Fluids and Kidney                           | 10 BCQs  |
| 5. Blood & Immunity                                 | 10 BCQs  |
| 6. Respiratory System                               | 10 BCQs  |
| 7. Central and Peripheral nervous                   | 10 BCQs  |
| 8. Special Senses Physiology                        | 10 BCQs  |
| 9. GIT Physiology                                   | 10 BCQs  |
| 10. Endocrine and reproductive System               | 10 BCQs  |

**TOTAL 100 BCQ's**

#### M.Phil Entry Test of Pharmacology (100 BCQ's)

|                                  |          |
|----------------------------------|----------|
| 1. General Pharmacology          | 15 BCQ's |
| 2. Autonomic Nervous System      | 14 BCQ's |
| 3. Cardio Vasular System         | 10 BCQ's |
| 4. Diuretics                     | 03 BCQ's |
| 5. Blood                         | 04 BCQ's |
| 6. Autacoid                      | 06 BCQ's |
| 7. GIT                           | 04 BCQ's |
| 8. Respiratory                   | 06 BCQ's |
| 9. Endocrines                    | 06 BCQ's |
| 10. NSAIDs                       | 02 BCQ's |
| 11. Drug Treatment of Gout       | 02 BCQ's |
| 12. Drug Treatment of Migraine   | 02 BCQ's |
| 13. Central Nervous System (CNS) | 10 BCQ's |
| 14. Antimicrobials               | 10 BCQ's |
| 15. Therapeutics                 | 06 BCQ's |

**TOTAL 100 BCQ's**

# SCHEDULE FOR ADMISSION

## SCHEDULE FOR ADMISSIONS:

- 1) Application forms to be issued from Postgraduate Medical Centre, Near at CPSP Library, Nawabshah (SBA) with effect from ..... (18.12.2023)
- 2) Last date for submission of application forms @ Postgraduate Medical Center PUMHS ..... (26.12.2023)
- 3) Submission of application forms with late fee of Rupees 500/= @ Postgraduate Medical Center PUMHS up to ..... (28.12.2023)
- 4) Display of the list of eligible candidates ..... (30.12.2023)
- 5) Issuance of Admit Slip from office of the controller of Post Graduate Examinations..... (03.01.2024)
- 6) Entry test for FCPS-II / All Diploma / MCPS/ M.Phil. & MSPH..... (08.01.2024)
- 7) MD / MS Part-I Examination ..... (09 & 10 / 01 / 2024)
- 8) Display of list of the successful candidates of FCPS-II / M.D & M.S Part-I Examination..... (12.01.2024)
- 9) Interviews for FCPS-II / M.D & M.S Part-I (Only Successful Candidates) ..... { (16. 01.2024  
(17. 01.2024  
(18.01.2024)
- 10) Interviews for All Diploma & MCPS Courses (Only those Candidates who have Appeared in Entry Test).....
- 11) Interviews for All M.Phil. / MSPH / DMJ & DCP (Only those Candidates who have Appeared in Entry Test)..... (20. 01.2024)
- 12) Final Display of list of all Selected candidates after Interviews.....
- 13) Issuance of Selection / Admission Letter..... (22. 01.2024)
- 14) Start of Classes of Academic Session September 2023 from ..... (29.01.2024)

VENUE FOR INTERVIEWS: At CONFERENCE ROOM OF VICE CHANCELLOR'S SECRETARIAT PUMHSW (SBA).

All FCPS-II / M.D / M.S Part – I (Successful Candidates)  
DATED: === ➔ 16<sup>th</sup> January 2024 @ 10:00 am sharp.

=====

 VENUE FOR INTERVIEWS: At CONFERENCE ROOM OF VICE CHANCELLOR'S SECRETARIAT PUMHSW (SBA).

All Diploma & MCPS Clinical side (Only those Who have appeared in Entry Test)  
DATED: === ➔ 17<sup>th</sup> January 2024 @ 10:00 am sharp.

All M.Phil. / MSPH / DMJ & DCP Basic side (Only those Who have appeared in Entry Test)  
DATED: === ➔ 18<sup>th</sup> January 2024 @ 10:00 am sharp.



S. No.

# APPLICATION FORM

FOR POSTGRADUATE COURSE 2024-25  
**PEOPLES UNIVERSITY OF MEDICAL & HEALTH  
SCIENCES FOR WOMEN SHAHEED BENAZIR ABAD,  
SINDH-PAKISTAN**

Passport  
Size  
Photograph

To,  
**The Registrar,  
PUMHSW, Shaheed Benazir Abad**

## PERSONAL BIO DATA

|                                |
|--------------------------------|
| NAME OF APPLICANT:             |
| FATHER'S/HUSBAND'S NAME:       |
| PRESENT POSITION:              |
| PRIVATE/IN-SERVICE CANDIDATE:  |
| COURSE APPLIED FOR:            |
| NAME OF EMPLOYER ORGANIZATION: |
| PRESENT ADDRESS:               |
| PERMANENT ADDRESS:             |
| PM&DC REG: NO.                 |
| TELEPHONE NO:                  |
| CELL NO:                       |
| EMAIL:                         |
| NATIONALITY:                   |
| DOMICILEC:                     |
| N.I.C. NO:                     |
| PASSPORT NO:                   |

# ACADEMIC RECORD

YEAR OF GRADUATION  
INSTITUTE OF GRADUATION

| EXAMINATIONS PASSED      | YEAR | NO. OF ATTEMPTS | MARKS OBTAINED |
|--------------------------|------|-----------------|----------------|
| 1st PROF.                |      |                 |                |
| 2nd PROF.                |      |                 |                |
| 3rd PROF.                |      |                 |                |
| FINAL PROF.              |      |                 |                |
| ANY OTHER QUALIFICATIONS |      |                 |                |

## RECORD OF EXPERIENCE

| NATURE OF JOB                      | DURATION | speciality | INSTITUTION |
|------------------------------------|----------|------------|-------------|
| 1. HOUSE JOB                       |          |            |             |
|                                    |          |            |             |
| 2. ALL JOBS IN CHRONOLOGICAL ORDER |          |            |             |
| 3. COURSES ATTENDED                |          |            |             |
| 1. RURAL SERVICE (IF ANY)          |          |            |             |

I solemnly declare that the information furnished in this application form is correct to the best of my knowledge. I further declare that I shall abide by all the rules & regulations of Postgraduate Education Committee of Peoples University of Medical & Health Sciences, Nawabshah.

Dated \_\_\_\_\_

(Signature of Candidate)



**ADMIT CARD**

FOR ENTRY TEST/ EXAMINATION  
CENTRE: PUMHS NAWABSHAH

**FOR CANDIDATE**

Passport  
Size  
Photograph

|                          |
|--------------------------|
| SEAT NO                  |
| NAME                     |
| S/O, D/O, /W/O           |
| COURSE APPLIED FOR       |
| INSERVICE /PVT CANDIDATE |

**SIGN:** \_\_\_\_\_  
CONTROLLER OF EXAM(PGS)  
PEOPLES UNIVERSITY OF MEDICAL  
AND HEALTH SCIENCES  
NAWABSHAH SBA

**SIGN:** \_\_\_\_\_  
DIRECTOR POSTGRADUATE MEDICAL CENTRE  
PEOPLES UNIVERSITY OF MEDICAL AND  
HEALTH SCIENCES  
NAWABSHAH SBA

**ADMIT CARD**

FOR ENTRY TEST/ EXAMINATION  
CENTRE: PUMHS NAWABSHAH

**OFFICE COPY**

Passport  
Size  
Photograph

|                          |
|--------------------------|
| SEAT NO                  |
| NAME                     |
| S/O, D/O, /W/O           |
| COURSE APPLIED FOR       |
| INSERVICE /PVT CANDIDATE |

**SIGN:** \_\_\_\_\_  
CONTROLLER OF EXAM(PGS)  
PEOPLES UNIVERSITY OF MEDICAL  
AND HEALTH SCIENCES  
NAWABSHAH SBA

**SIGN:** \_\_\_\_\_  
DIRECTOR POSTGRADUATE MEDICAL CENTRE  
PEOPLES UNIVERSITY OF MEDICAL AND  
HEALTH SCIENCES  
NAWABSHAH SBA



## CHECKLIST OF DOCUMENTS TO BE ATTACHED

|                 |          |
|-----------------|----------|
| NAME OF COURSE: | FORM NO. |
|-----------------|----------|

**FOLLOWING ATTESTED DOCUMENTS ARE ESSENTIAL TO BE ATTACHED WITH THIS APPLICATION FORM**

| S. No. | NAME OF DOCUMENT   | YES | NO |
|--------|--|-----|----|
| 1      | LATEST 4 PASSPORT SIZE PHOTOS  |     |    |
| 2      | MBBS DEGREE CERTIFICATE  |     |    |
| 3      | CONSOLIDATE / SEPRATE MARKSHEET OF ALL EXAMINATIONS PASSED   |     |    |
| 4      | VALID PMDC REGISTRATION CERTIFICATE  |     |    |
| 5      | HOUSE JOB CERTIFICATE(S)   |     |    |
| 6      | ANY OTHER QUALIFICATIONS   |     |    |
| 7      | ORIGIONAL BANK CHALLAN OF 7500/= FOR PROSPECTUS AND ENTERY FEES RS 8000/= FOR PROSPECTUS AND ENTERY FEES |     |    |
| 8      | MATRICULATION CERTIFICATE  |     |    |
| 9      | INTERMEDIATE CERTIFICATE   |     |    |
| 10     | DOMICILE / PRC CERTIFICATE   |     |    |
| 11     | CNIC   |     |    |
| 12     | LIST OF SHORT DOCUMENTS TO BE FILLED BY OFFICE OF PGMC   |     |    |

**SIGNATURE:**





Fax: +92-244-9370261  
Office: +92-244-9370260  
Email: vc@pumhs.edu.pk

Office of the Registrar:  
Office: +92-244-9370249-55 Ext:2211  
Email: registrar@pumhs.edu.pk

**Peoples University of Medical & Health Sciences for Women  
Nawabshah, Shaheed Benazir Abad Sindh-67480, Pakistan**